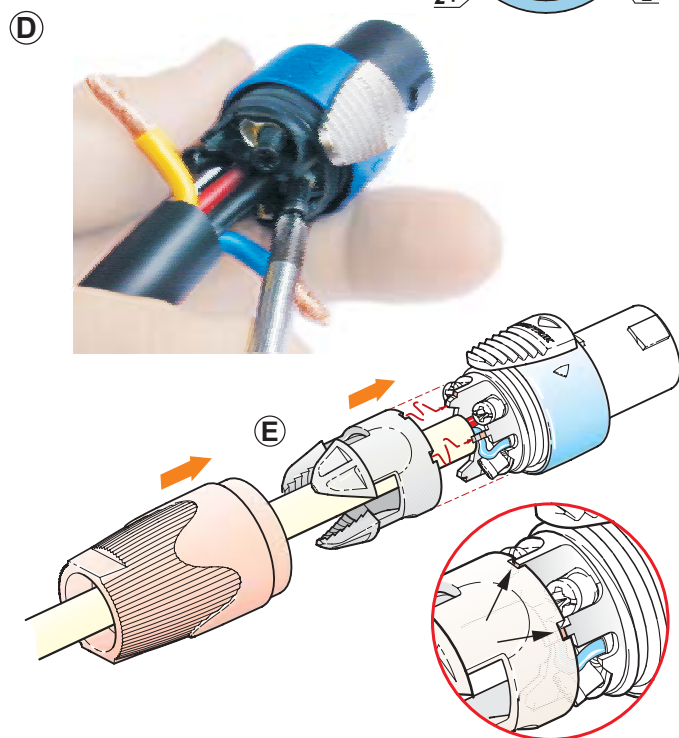
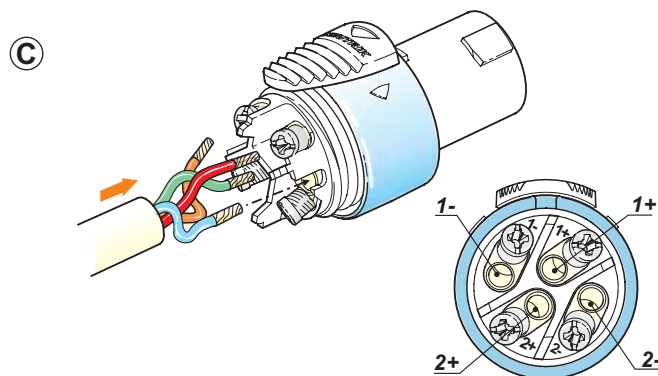
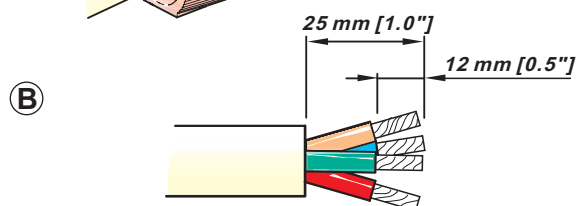
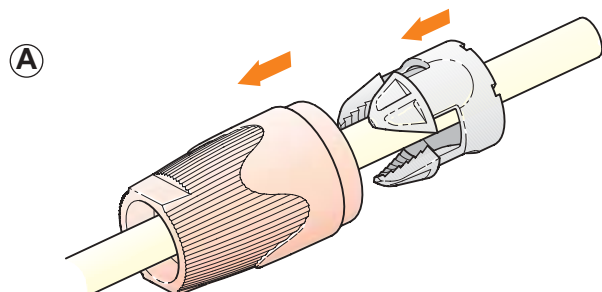


Lockable Loudspeaker Connector

Speakon® SPX Series

NL4FX / NL4FRX

Assembly Instructions



Assembly of the Connector:

Ⓐ Place bushing and chuck over cable.

Ⓑ Prepare cable as shown.

Important is the stripping length of 25 mm and 12 mm.

Ⓒ Insert wires into terminals and secure clamp terminals with screw driver (Pozidrive®).

Ⓓ For easy wiring especially on big cables, first screw on the inner contacts 1+ and 2+ and afterwards the outer contacts 1- and 2- !

Ⓔ Push chuck up to housing .

Important: Align the chuck by positioning the nose into the recess.

Ⓕ Tighten the bushing

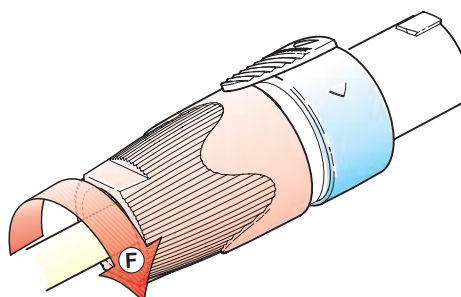
INFO to the screw driver:



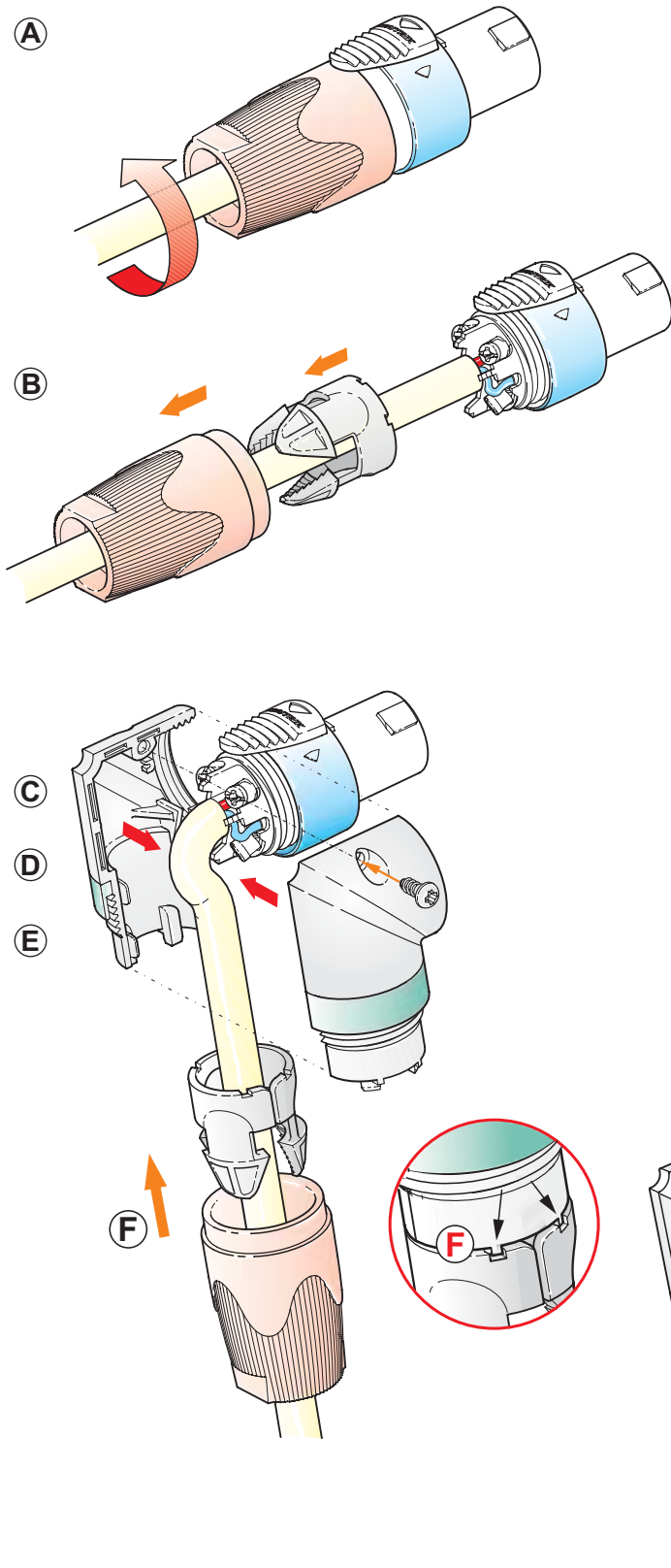
DO NOT USE!

Pozidrive #1

Philips



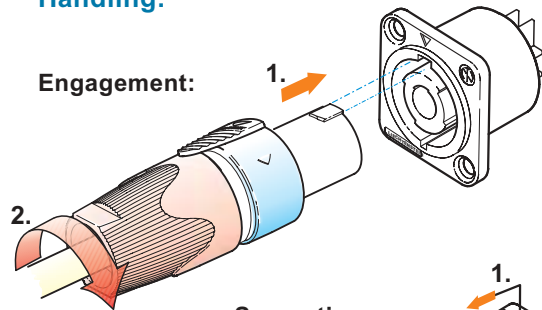
Assembly of the Conversion Kit:



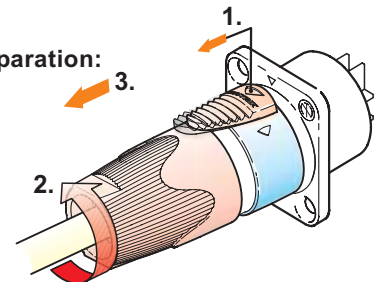
- A** Open the bushing.
 - B** Slide the bushing and the chuck back.
 - C** Bend the cable as shown.
 - D** Position the two conversion shells to fit on the connector thread.
 - E** Press together and fix by screw.
 - F** Slide the chuck onto the housing and fasten the bushing.
- Important:** Align the chuck by positioning the nose into the recess.

Handling:

Engagement:



Separation:



NEUTRIK AG
Liechtenstein
Tel.: +423/237 24 24
Fax: +423/232 53 93
www.neutrik.com

NEUTRIK Zürich AG
Switzerland
Tel.: +41 1/736 5010
Fax: +41 1/736 5011

NEUTRIK (UK) Ltd.
Great Britain
Tel.: +44 1983/811 441
Fax: +44 1983/811 439

NEUTRIK USA INC.
USA
Tel.: +1 732/901 9488
Fax: +1 732/901 9608

NEUTRIK Tokyo Ltd.
Japan
Tel.: +81 3/3663 4733
Fax: +81 3/3663 4796

NEUTRIK France
France
Tel.: +33 1/4131 6750
Fax: +33 1/4131 0511

NEUTRIK Vertriebs GmbH
Germany / Netherlands
Tel.: +49 8131/28 08 90
Fax: +49 8131/28 08-30

Draft. Nr.: BDA 114 / 3102M1171
Update: 31.07. 2003

Data subject to change without prior notice. ©2003 NEUTRIK®. ALL RIGHTS RESERVED.



NEUTRIK®
CONNECTING THE WORLD