

PROFESSIONAL AUDIO-VIDEO EQUIPMENT

QTEX



USER MANUAL

Models:

MDA-113	MDA-112	MDA-115
MDA-224	MDA-558	MDE-715
MDM-440	MDH-612	MDH-621

1. Contents

1. General Introduction	3
2. Series description	3
3. Installation Procedures	4

2. Tables

Table 1. Technical specification	5
Table 2. Application diagram	6

1. General Introduction

QTex multifunctional interconnect boxes are made to organize easy access points for computer, multimedia and other network devices and power supply. Both interchangeable connector modules and standard configurations are available. Hidden flush surface of the Boxes makes them ideal for use in presentation and meeting halls, studios and many other applications. Body colors are available in matte black or aluminum silver.

2. Series description

MDE series

MDE series are equipped with motorized lift open/close mechanism with hand protection.

This series Boxes have pass through connectors on the lower panel of the body. Standard configuration is shown in Table 1.

MDA series

MDA series Interconnect Boxes are equipped with pneumatic spring which opens the box and holds it in position.

MDA-112, MDA-113, MDA-115, MDA-224 models have 1.8m long cables on the back side.

MDA-558 model has pass through connectors on the bottom side of the Box. A “Shift” button (only on applicable models) is used to switch dry contacts. Standard configurations are shown in Table 1.

MDM Series

MDM Series Boxes are equipped with flip up covers.

Each Box has 6 openings for any type of cable.

Standard configurations are equipped with cables as shown in Table 1.

MDH Series

MDH series are equipped with flip up covers which hide of sight in open position.

Each Box has 6 openings for any type of cable.

A “Shift” button (only on applicable models) is used to switch dry contacts. Standard configurations are equipped with cables as shown in Table 1.

3. Installation Procedures

Step 1.

Cut an opening into the table's surface. Refer to Table 1 for cutout dimensions requirements and maximum table thickness.

Always confirm dimensions before cutting to insure that specifications have not changed.

Step 2.

Insert the interconnect boxes into the table cutout.

Step 3.

Place the support brackets under the table and place them between the support mount grooves on the side of the interconnect boxes. Attach the brackets to the groove at the desired height and secure them to the bottom of the table using the thumb screws provided.

Step 4.

Secure the cables by using the provided cable clamps and screws included with the unit. Pass the power cord from the bottom of the housing and attach it to the table using the cable clamp.

Leave enough slack in the service loop to allow for easy opening and closing, but not too much as to cause excess drooping of the service loop.

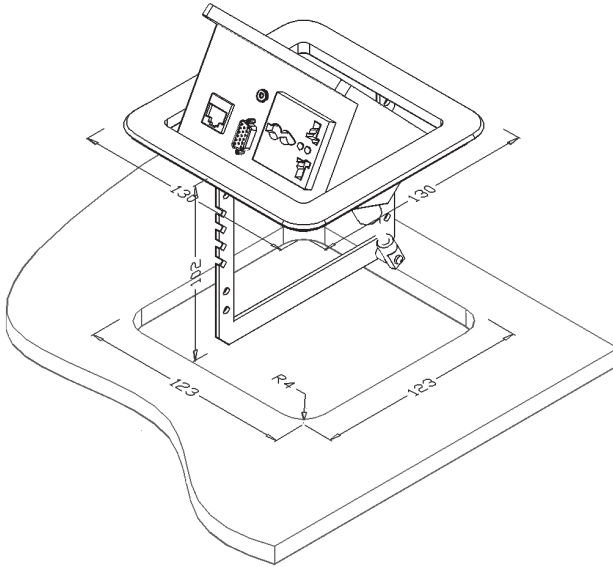
Step 5.

Connect the appropriate cables with the correct input connectors on the bottom of the unit.

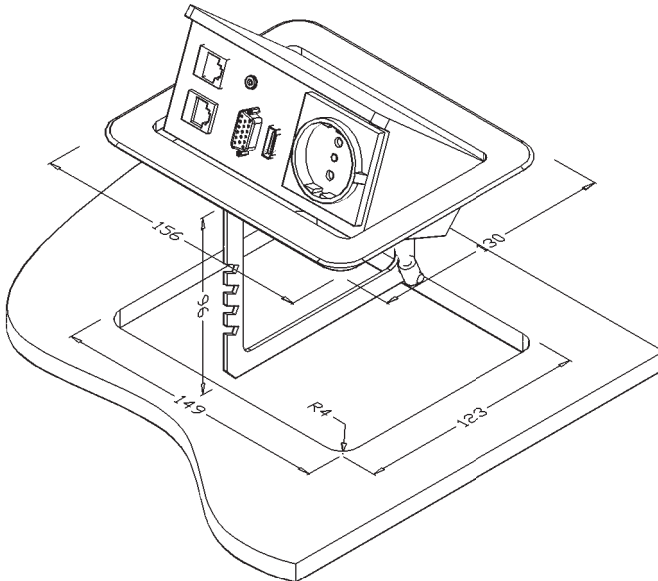
Table 1. Technical specification

	MDA-113	MDA-112	MDA-115	MDA-224	MDA-558	MDE-715	MDM-440	MDH-612	MDH-621
Dimension:									
Panel, mm	130x130	156x130	156x130	193x150	208x152	200x144	156x130	200x130	200x130
Table cutout, mm	123x123	149x123	149x123	149x123	182x140	200x144	149x123	194x124	194x124
Connectors/cables :									
AC Power 100-240 V, 50/60 Hz	UNIV(F)-EU(M) (1)	EU(F-M) (1)	EU(F-M) (1)	EU(F-M) (2)	EU(F-M) (1)	EU(F-M) (1)	UNIV(F)-EU(M) (1)	UNIV(F)-EU(M) (1)	UNIV(F)-EU(M) (1)
D-Sub HD15 (VGA)	F-M (1)	F-M (1)	F-M (1)	F-F (1)	F-F (1)	F-F (1)	M-M (1)	M-M (1)	F-F (1)
HDMI type "A" 19 pin		F-M (1)			F-F (1)				
USB type "A"			F-M (1)		F-F (1)	F-F (1)	F-M (1)	F-M (1)	
RJ45	F-M (1)	F-M (2)	F-M (1)	F-M (2)	F-M (2)	F-M (2)	M-M (3)	F-M (2), M-M (3)	F-F (4)
3.5 mm minijack stereo	F-M (1)	F-M (1)	F-M (1)	F-M (1)	F-M (1)	F-M (1)			
XLR 3 pin									F-F (1)
Button "shift"			(1)	(1)	(1)				(1)
Net Weight (approx.), kg	1,5	1,5	1,5	2,2	3,3	1,5	2,2	2,2	2,2
Shipping Weight, kg	2	2,3	2,3	3	4,1	2,3	3	3	3
Max. Table Thickness, mm	35	75	85	75	75	75	65	65	65
T° Operating	10°C-30°C	10°C-30°C	10°C-30°C	10°C-30°C	10°C-30°C	10°C-30°C	10°C-30°C	10°C-30°C	10°C-30°C
T° Maximum	35°C	35°C	35°C	35°C	35°C	35°C	35°C	35°C	35°C
Humidity	75%	75%	75%	75%	75%	75%	75%	75%	75%

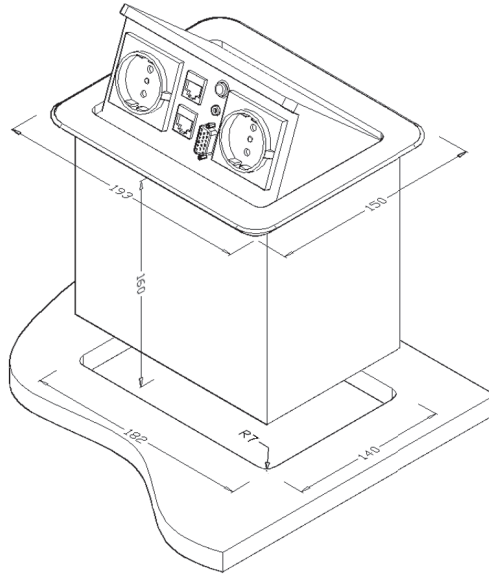
Table 2. Application diagram



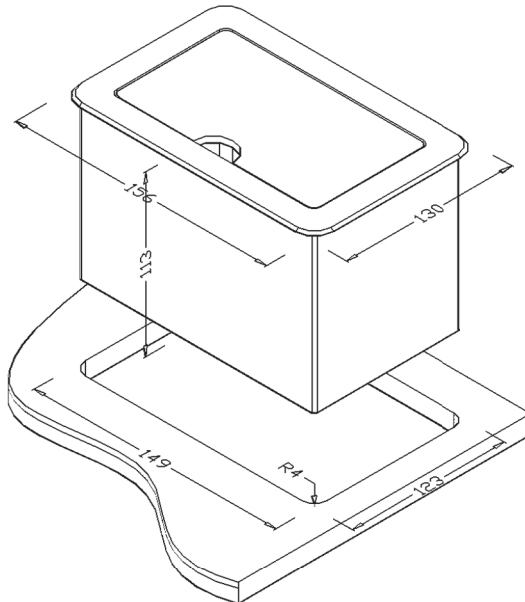
MDA-113



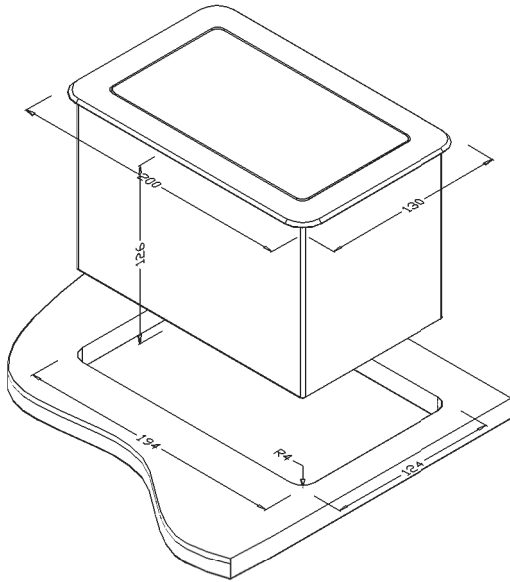
**MDA-112
MDA-115
MDA-224**



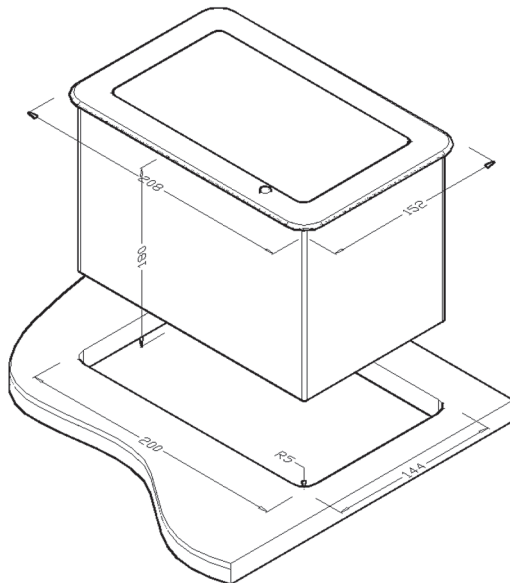
MDA-558



MDM-440



MDH-612
MDH-621



MDE-715

