

# INVOLIGHT

## MH VIDEO HD

## User Manual



Thanks for choosing our goods please read this manual carefully before your operating and keep this

manual for future needs

Thank you for purchasing GVP4096, every unit has been thoroughly tested and has been shipped in perfect operating condition. Carefully check the shipping carton for damage that may have occurred during shipping. If the carton appears to be damaged, carefully inspect your fixture for any damage and be sure all accessories necessary to operate the unit has arrived intact. In the case damage has been found or parts are missing, please contact the manufacturer or your dealer for further instructions. You now own a professional lighting unit that offers endless possibilities.

For your own safety and that of others, please read this instruction manual carefully before installing the unit.

Anyone involved in installing, operating or servicing the Super Beam 60 must:

- **Be a qualified, authorized professional**
- **Strictly follow the instructions in this user manual.**

Please take the time to read this manual carefully and thoroughly before installing and operating the luminaire. You should have a good knowledge of its operating conditions and all pertinent product information.

After you have become familiar with this manual, we recommend that you keep a copy for future use. All the information found in this manual

is subject to change without notice. We reserve the right to modify and upgrade its range of products, with no obligation to integrate these changes into products already sold.

### **Warning**

- To prevent or reduce the risk of electrical shock or fire, do not expose the unit to rain or moisture.
- Please consider that damages caused by manual modifications to the device are not subject to warranty.

### **Installation**

The unit should be mounted via its screw holes on the bracket. Always ensure that the unit is firmly fixed to avoid vibration and slipping while operating. And make sure that the structure to which you are attaching the unit is secure and is able to support a weight of 10 times of the unit's weight. Also always use a safety cable that can hold 12 times of the weight of the unit when installing the fixture.

The equipment must be fixed by professionals. And it must be fixed at a place where is out of the touch of people and has no one pass by or under it.

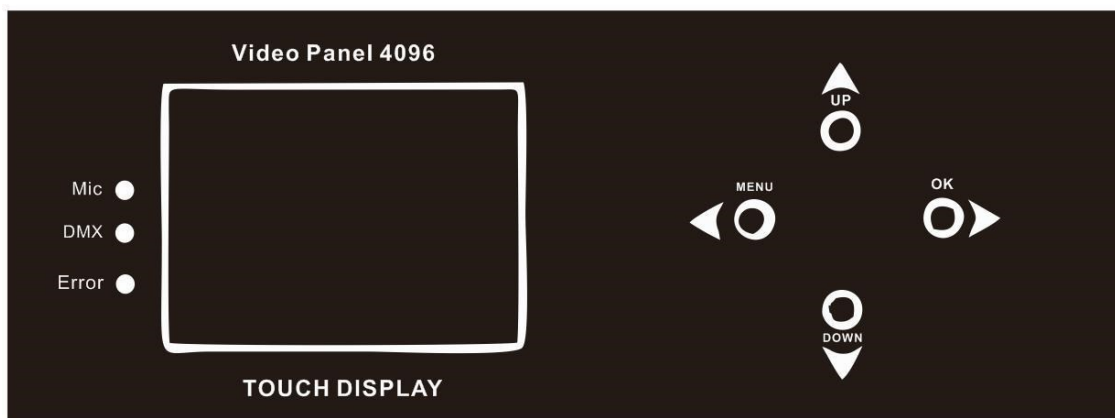
## **Specifications and Features:**

- DMX Channel: 15CH
- Pixel pitch (mm): 6
- LED Source: 4096pcs SMD5050 RGB LED
- Continuous PAN and TILT rotation
- Dynamic color macro effect with variable speed
- Electronic dimmer from 0 to 100% without color variation
- LCD display for addressing and special functions settings
- Control:DMX 512,Art-net,Auto,Manual
- Electronic supply with active PFC
- Super compact, low weight
- Extremely accurate positioning
- Over temperature protection
- Power Input: AC90~240V,50/60HZ
- Power: Max 200W
- Product Size: 48 x 28 x 62 cm
- Carton Size: 61 x 41 x 75 cm
- Net Weight: 15.5 KG
- Gross Weight: 17KG

## Product View



## Menu Operation



- DMX: When DMX Signal in, the LED will be flash
- ERR: When the Light error, the LED will be flash
- Mic: Sound Control (No use now)
- Menu: Click enter into main menu to choose the function
- Up: Click to choose the up value
- Down: Click to choose the down value
- OK: Click to confirm the data

## Back Panel



## The Connection

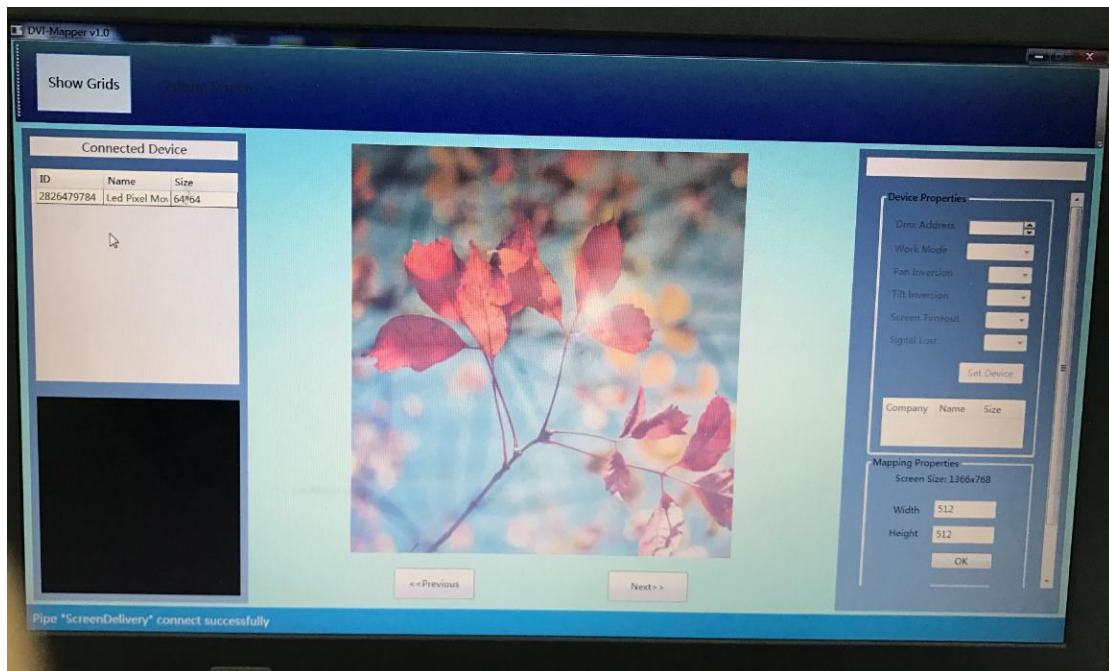
Powercon Blue: Use the power cable connect the light

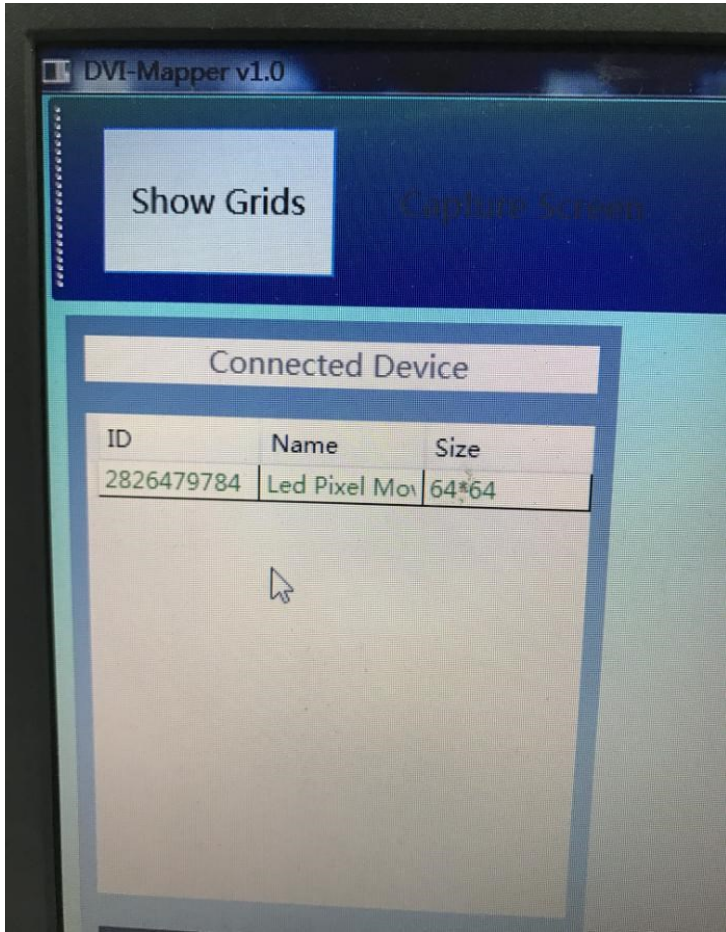
Powercon White: Use powercon cable to supply the power to another light

3pin&5pin XLR connector: Use DMX Controller to connect the light. It can control the XY movement, built-program.

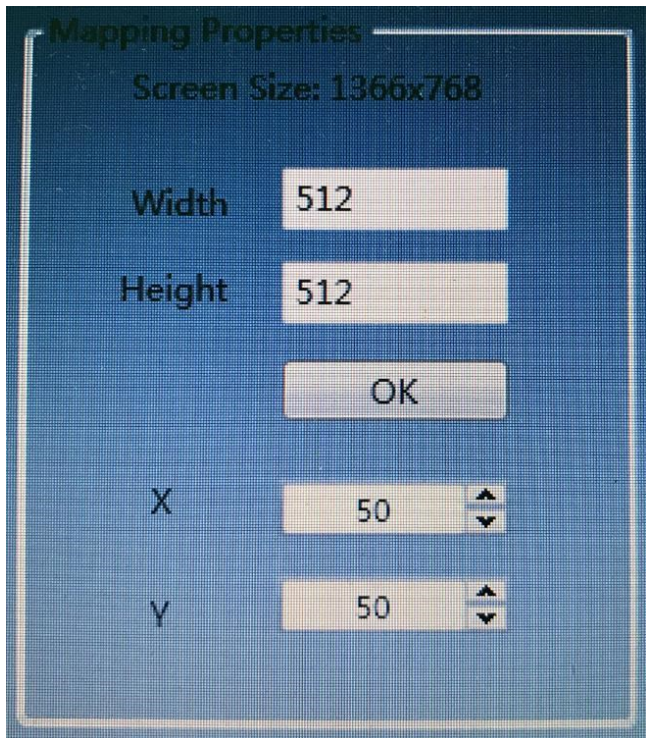
Ethernet: Use Cat5 connect with computer to play the video and effect through software

## DVI Mapper

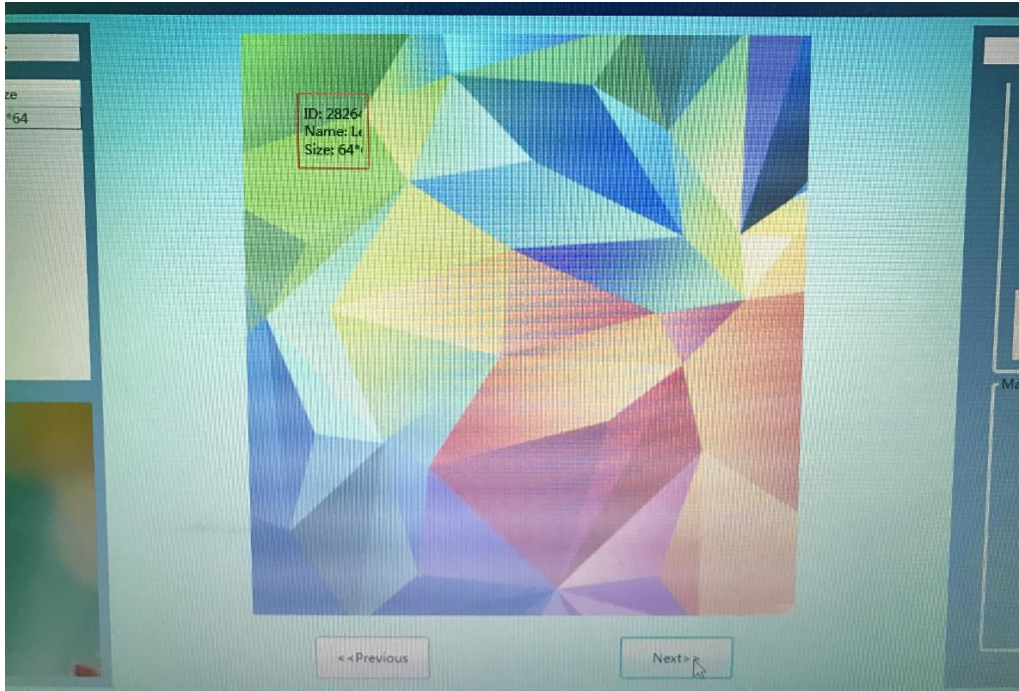




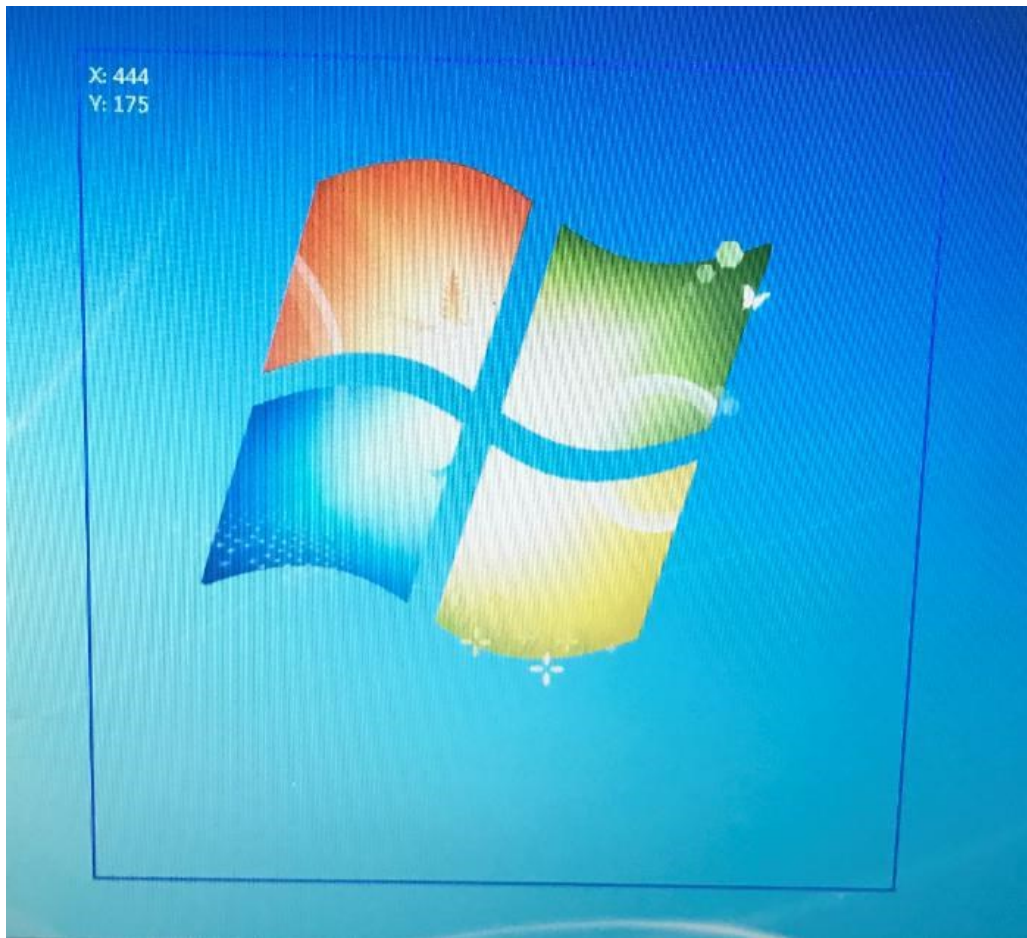
DVI Mapper can auto recognize the device.



Set the video panel size, for example if 10pcs GVP4096, it will be Width: 640, Height: 640

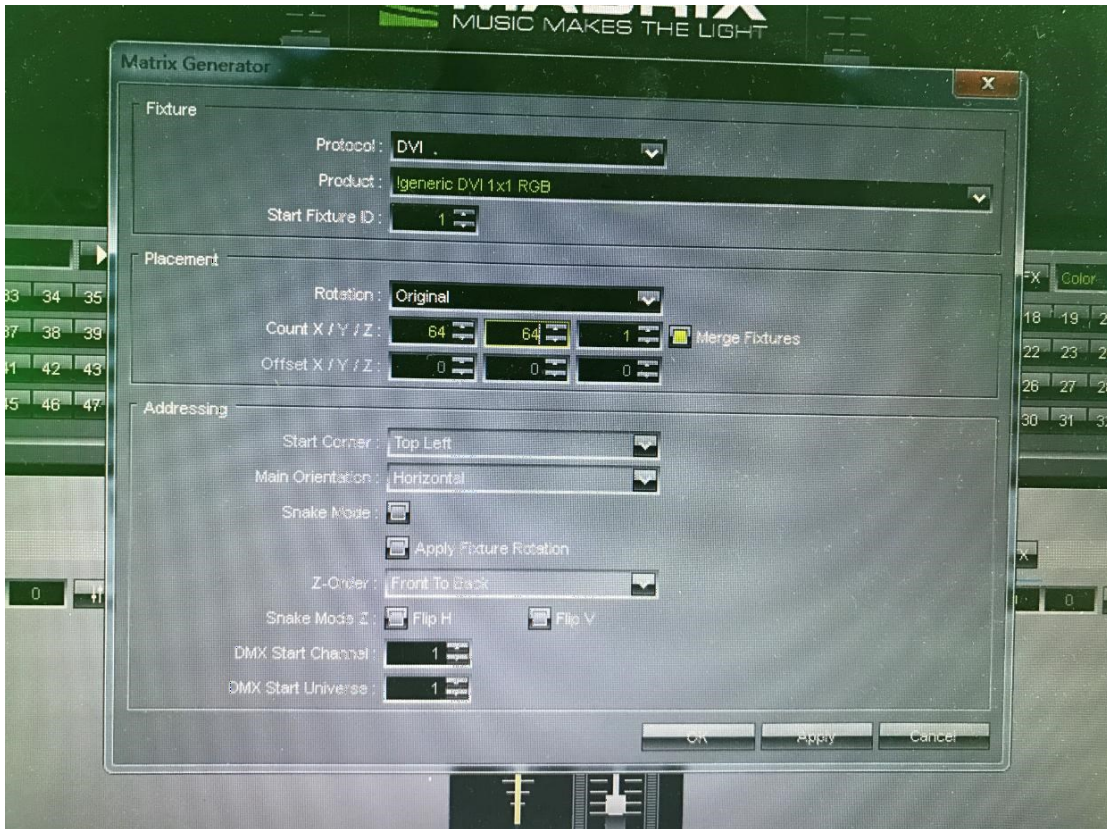


Draw the connected device to this window, you can move at any position in this image.

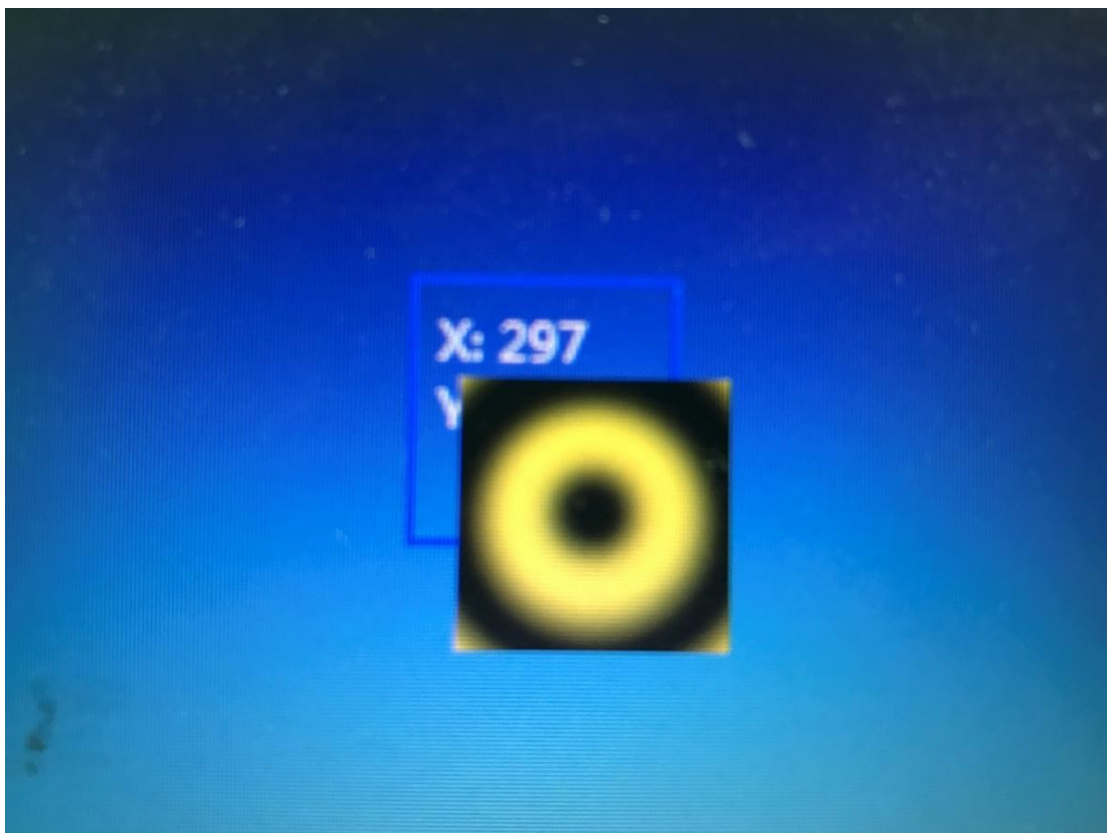


After set well, the computer will show the capture window.





Open the Madrix, set the Matrix Generator, choose the DVI, set the effect.



Then show two windows, one is from the Madrix, one is DVI mapping, Make the two windows in same position. For example, if not in same position the light will show like this:



It can use router to connect the light and computer, then no need set the IP address and universal.

## Menu



DMX: Choose the DMX Address

Network: Set the Network address, Net Mask and Universe

WorkMode: Choose the work Mode

Setting: Set the light parameter

Reset: Reset the light

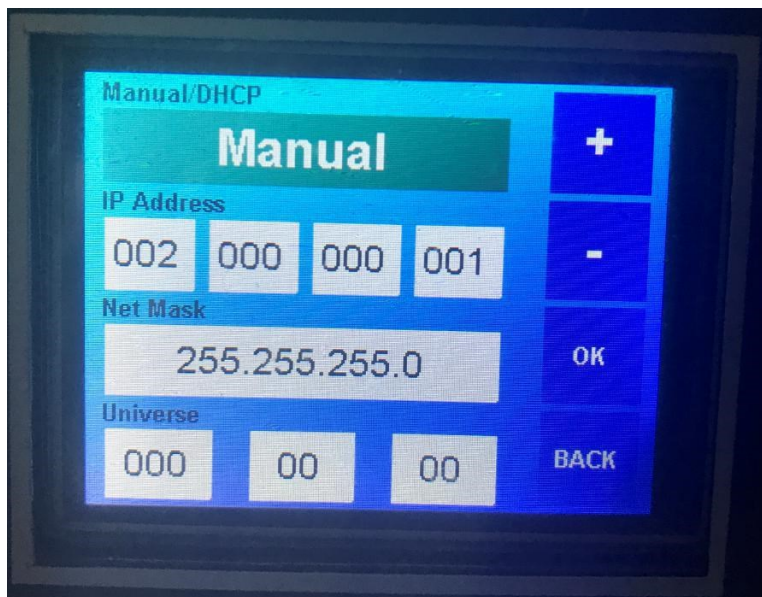
Home: Return to intial interface

## DMX Address Set

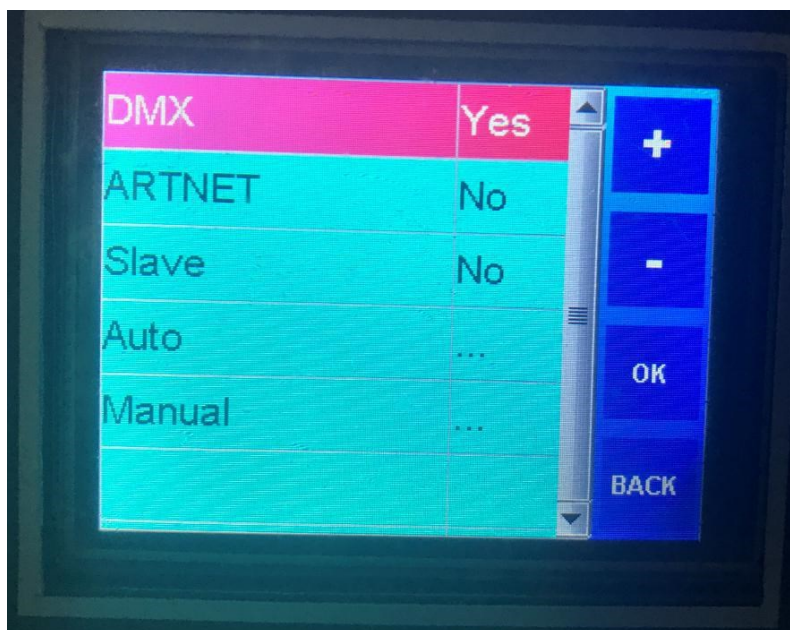


Push the UP or Down to choose the DMX Address, after push OK to confirm.

## Network Set



## Work Mode Set



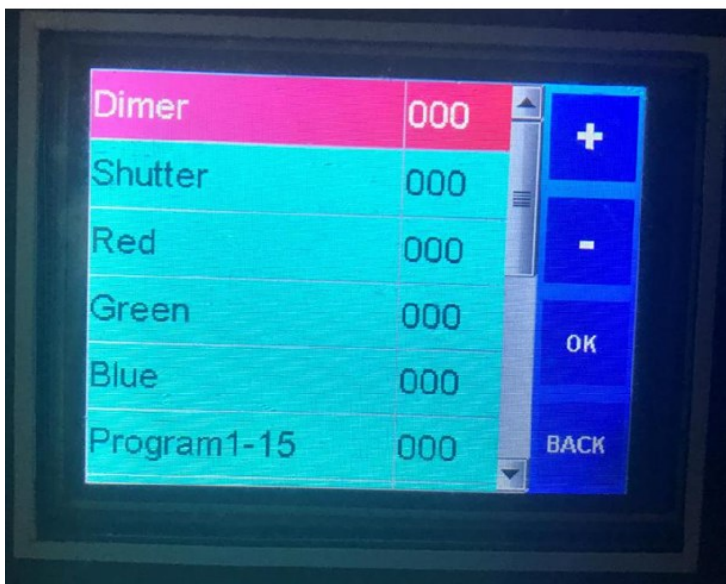
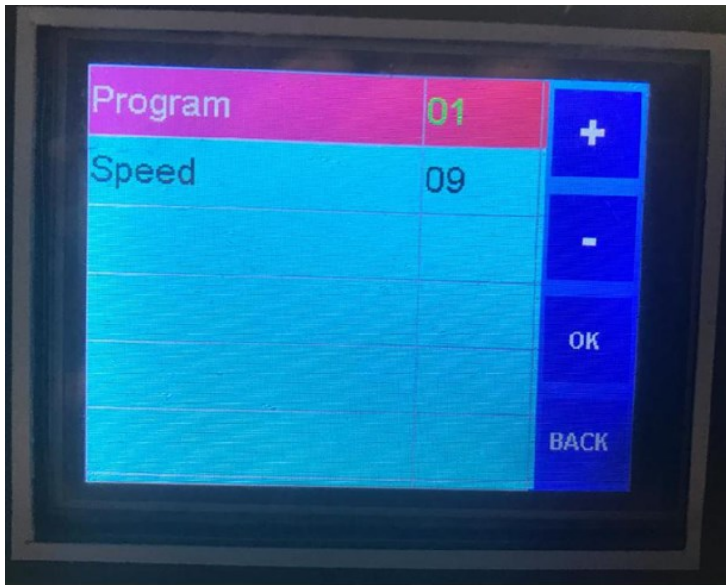
DMX: DMX Mode

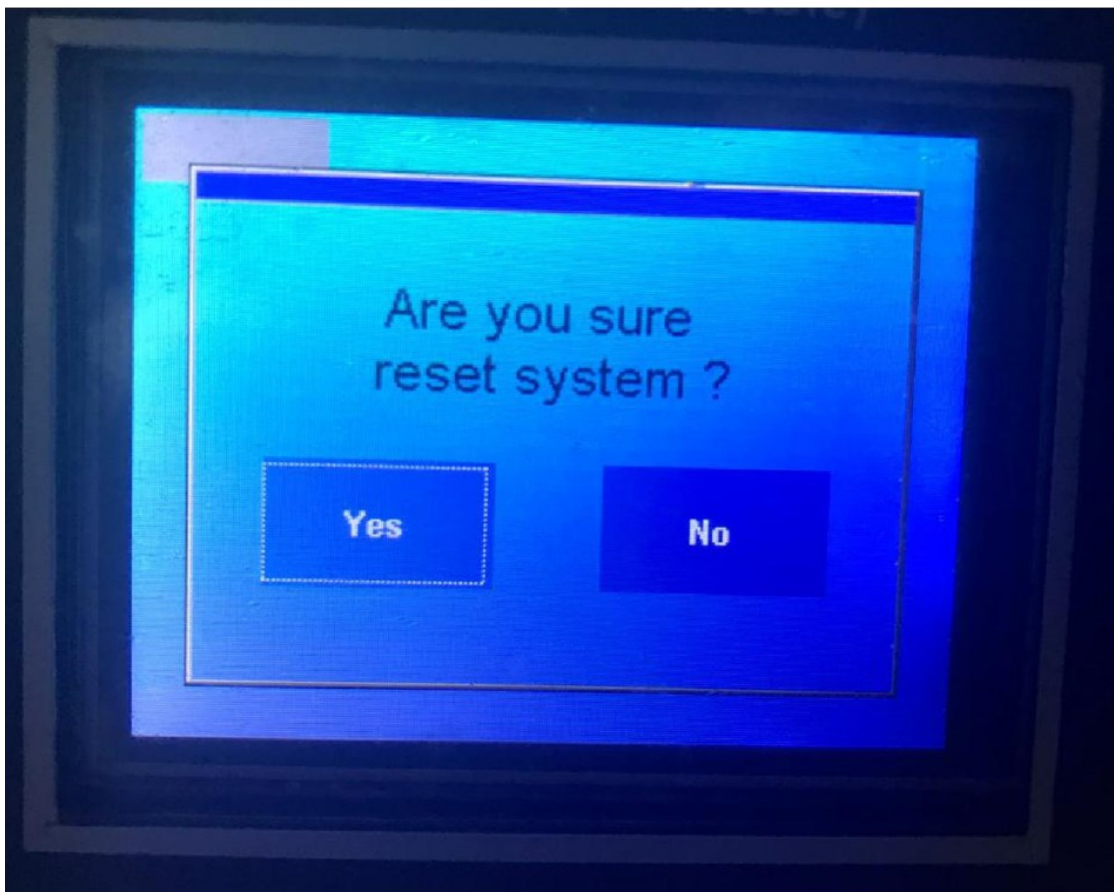
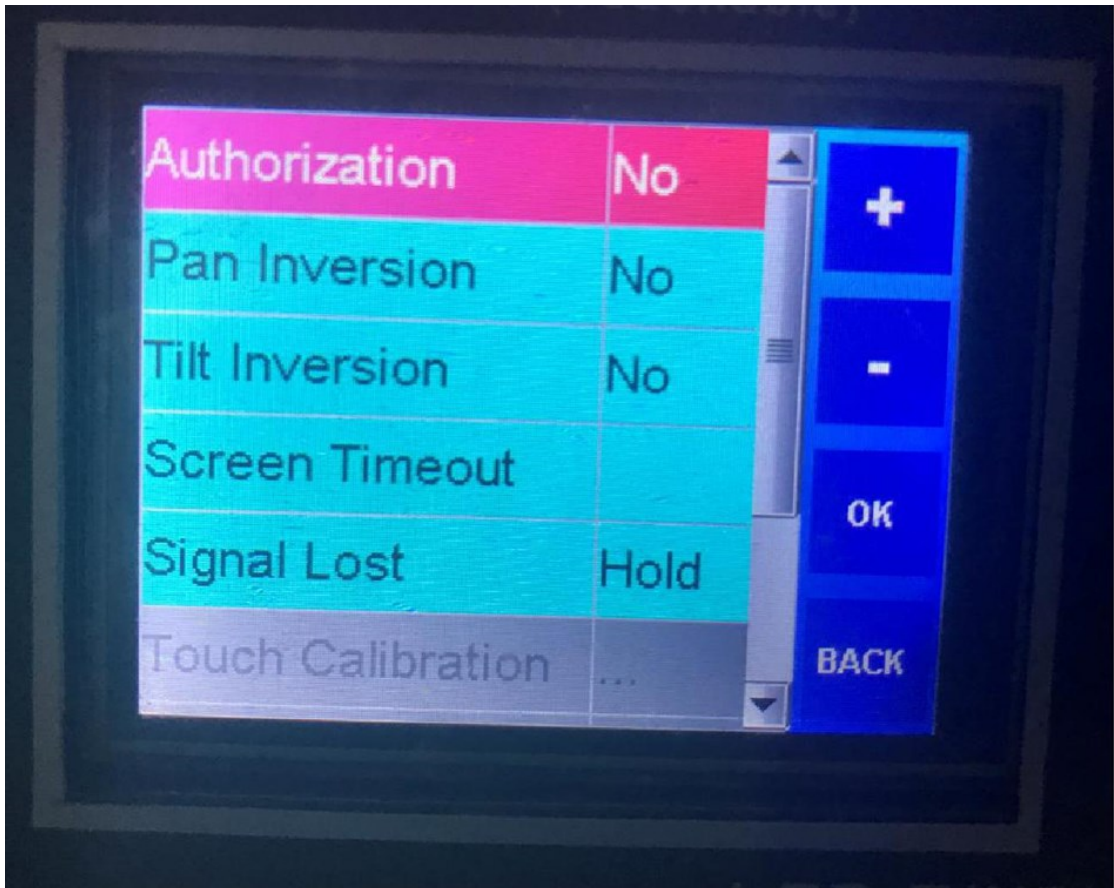
ARTNET: Internet work Mode

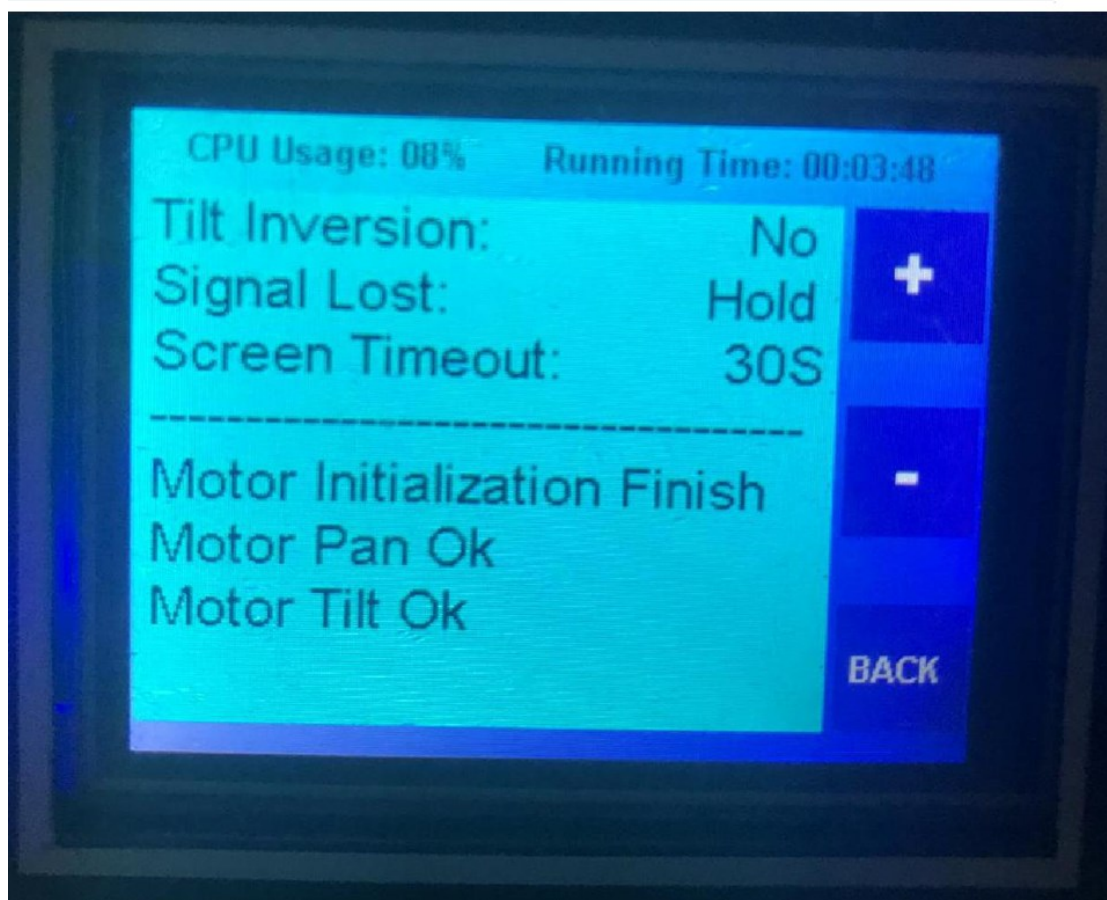
Slave: Slave Mode

Auto: Auto Run Mode

Manual: manual set the light value







CH1	Dimmer
CH2	Strobe
CH3	Red
CH4	Green
CH5	Blue
CH6	Program 1 – Program 15
CH7	Program 16 – Program 29 Program 30 Auto run program
CH8	Speed of program
CH9	Movement for X-axle
CH10	Adjustment for X-axle
CH11	Movement for Y-axle
CH12	Adjustment for Y-axle
CH13	XY Speed
CH14	Reset
CH15	0~127 DMX Mode 128~255 Network Mode
CH16	Record Program (Invalid)



## Troubleshooting

Following are a few common problems that may occur during operation.

Here are some suggestions for easy troubleshooting:

1. The unit does not work, no light and the fan does not work
  - a. check the connection of power and main fuse.
  - b. Measure the mains voltage on the main connector.
  - c. Check the power on Led.
2. Not responding to DMX controller
  - a. DMX LED should be on. If not, check DMX connectors, cables to see if link properly.
  - b. If the DMX LED is on and no response to the channel, check the address settings and DMX polarity.
  - c. If you have intermittent DMX signal problems, check the pins on connectors or on PCB of the unit or the previous one.
  - d. Try to use another DMX controller.
  - e. Check if the DMX cables run near or run alongside to high voltage cables that may cause damage or interference to DMX interface circuit.
3. Some units don't respond to the easy controller
  - a. You may have a break in the DMX cabling. Check the LED for the response of the master/slave mode signal.
  - b. Wrong DMX address in the unit. Set the proper address.

#### 4. One of the channels is not working well

- a. The stepper motor might be damaged or the cable connected to the PCB is broken.
- b. The motor's drive IC on the PCB might be out of condition

#### 5. Fixture Cleaning

The cleaning of internal and external optical lenses and/or mirrors must be carried out periodically to optimize light output. Cleaning frequency depends on the environment in which the fixture operates: damp, smoky or particularly dirty surrounding can cause greater accumulation of dirt on the unit's optics.

- a. Clean with soft cloth using normal glass cleaning fluid.
- b. Always dry the parts carefully.

## **Warranty**

The GVP4096 fixture is guaranteed against manufacturing defects for the duration of one (1) year from the date of purchase.

This warranty does not cover the unit for evidence of physical shock or damage caused by abuse or any use not in accordance with the operating conditions set forth in the present user manual.

In addition, cosmetic defects caused by the normal wear and tear of the unit are not covered under the warranty.

Any modification to the fixture will void the warranty. We cannot under any circumstances be held liable for quality and conformity regarding the installation of this product, which is the responsibility of the installer. The device and before use, may be covered by the warranty.

The manufacturer is not responsible for any errors or omissions that may occur in this document. All information contained in this manual is subject to change without notice.

The logo for INVOLIGHT features the word "INVOLIGHT" in a bold, black, sans-serif font. The letter "O" is replaced by a stylized graphic consisting of a solid green circle on the left and a black semi-circle on the right, which together form a shape resembling a light fixture or a stylized eye.