



## Public Address System Ceiling Speaker System WA279HD



### OWNER'S MANUAL

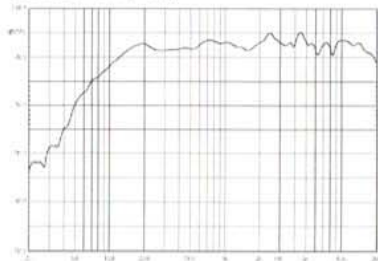
Thank you for purchasing PA speaker system of ZABKZ series. All of ZABKZ series products have been tested strictly before shipping. ZABKZ series PA speaker system is widely used in hotel, trade building, supermarket, school, entertainment, etc. It's the most ideal choice of you! In order to facilitate installing, modulating and running please read this manual carefully before setup.

#### FEATURES:

- Voltage 70/100V, Rated power 30W;
- Max. SPL  $111 \pm 2\text{dB}$ , Effective Freq. Range 100Hz-20kHz;
- Construction of dual-crossover, the directive property is strong, sensitivity  $96 \pm 2\text{dB}$ ;
- Weight 4.0kg. It is made of high quality engineering plastic, long-term durability, never out of shape and fade.

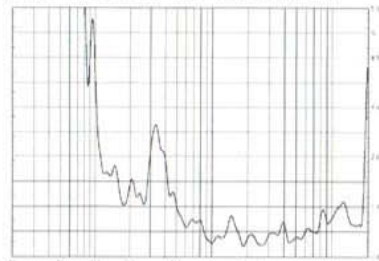
#### FREQ. RESPONSE

(dB SPL, 1W, 1m)



#### DISTORTION

(THD < 1.5% 1W, 1m, 100Hz-10kHz)



#### INSTALL HOLE

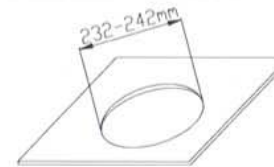


Figure ①

#### TAKE AWAY NET

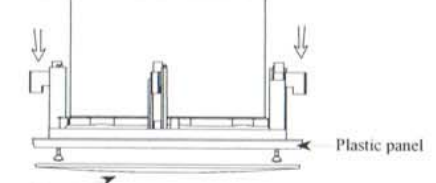


Figure ②

#### INSTALLATION

1. Cut a  $\varnothing 232-242\text{mm}$  installation hole on ceiling (Figure ①);
2. Pull the net (Figure ②);
3. Pass public address wire through the wire-protecting pipe to connect speaker's terminal, then fix up the strain relief fitting and the terminal cover plate (Figure ③);

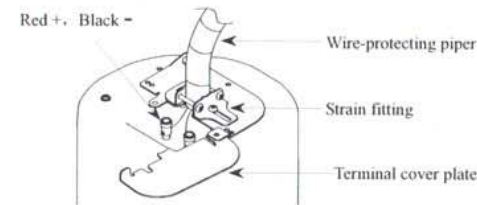


Figure ③

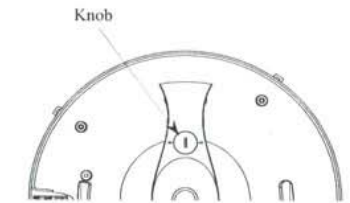


Figure ④

4. Select the power by the power selecting knob as you need (Figure ④);
5. Attach the auxiliary support line through the support ring to another point (Figure ⑤);

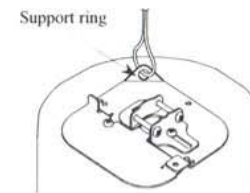


Figure ⑤

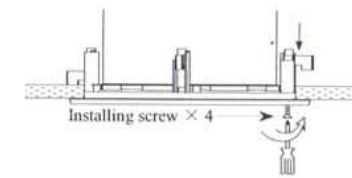


Figure ⑥

6. Push the speaker into the installation hole and turn the installing screw to fix up the speaker on ceiling (Figure ⑥);
7. Push the net into the plastic panel;
8. Adjust the direction of set and examine it is steady.