

laser
light source

Orchestrating a brighter world

NEC

Professional Installation Projectors ideal for corporate, higher education and museum applications

PA Series

4K UHD
READY



Powerful laser installation projectors equipped to take on the most demanding integration projects

Powerful Tools

- Multi-display support with Picture by Picture/Picture Out Picture
- TileMatrix (internal multi-screen splitter) enables 4Kx2K resolution utilizing 4 projectors without the need for external hardware
- Built-in daisy chain capabilities support multi-display applications
- Seamlessly blend multiple images with integrated edge blending capabilities

Integrated

- 4K Ready - Display stunning 4K 60P content using NEC's proprietary high performance video processing/scaling chip without the loss of critical details. HDR10 and BT.2020 signals from "Ultra HD Blu-ray" and "4K TV broadcasting" are supported on all digital inputs
- Integrated software applications such as AMX Beacon, Crestron Roomview, Extron XTP and PJ Link allow for complete control system support
- Lower the cost of your installation by eliminating the need for costly reprogramming of a control system. (supports competitors commands, call NEC for complete list)

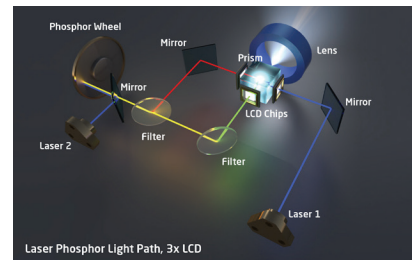


Flexible

- Enjoy greater installation flexibility with powered optional bayonet style lenses providing quick and easy exchanges. Lens throw distances range from 2.5 to 68.5 ft
- Tilt-free installation capabilities make these projector ideal for almost any install environment, including portrait orientation
- Up to 60% vertical lens shift and +/- 30% horizontal lens shift capabilities make alignment easy

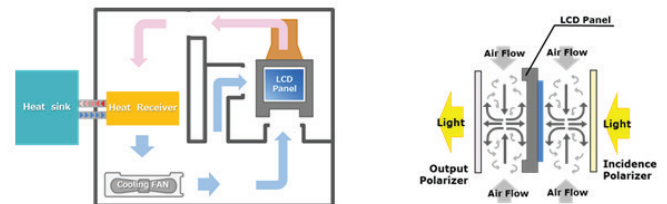
Laser

- Images appear immediately after power on due to instantaneous start up of the laser
- Dual blue laser systems provide best in class white balance over the life of the projector
- Inorganic optical components create longer lifetime and greater peace of mind



Filter Free

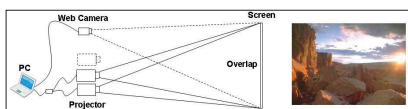
- World's first filter free LCD projector
- Sealed circulating cooling duct structure for LCD panel cooling
- External air never reaches the optical path
- No dust artifacts or decrease in brightness
- LCD SSL Projector that is maintenance free!



NEC's Unique LCD Panel Cooling Design

Stacking correction

The industry's first built-in stacking correction capabilities (up to four projectors) allows the projectors to boost an image's brightness up to 32,000 lumens, which is ideal for larger-sized screens and environments with heavy ambient light. This feature also prevents the complete loss of an image, which can happen when using only one projector.



Edge blending

This function seamlessly blends multiple projected images to display a single high-resolution image.



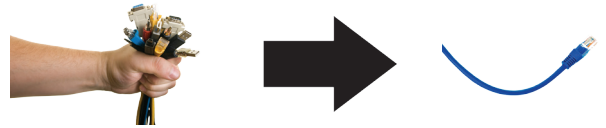
MultiPresenter

Utilization of the optional MultiPresenter Stick provides those looking for a network connection easy connection with up to 12 devices at once. (Win, MAC, Android, iOS) Screen mirroring for Android and Win. Simple annotation software.



Built-In HDBaseT Support

Simplify your installations with HDBaseT. Optimized for video applications and supporting uncompressed full HD digital video, audio, ethernet, power and various control signals. With only a single cable (up to 100m) to run, infrastructure and labor costs are reduced, installations are significantly easier, and there is no cable clutter to manage. With uncompressed HD video support, images have never been more stunning. What's more, control signals are contained in the same cable.



GET CONNECTED WITH A WIDE SELECTION OF INPUTS

- **Multiple Digital computer inputs** ensure quick switching between presentations
- **Five audio inputs (one mini stereo [HDMI1™ & HDMI2™, DisplayPort and HDBaseT])** make it easy to add sound to enhance your presentations

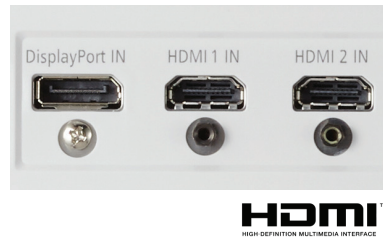
Remote control

Wired and wireless backlit remote allows you to adjust for complete control of the projector's menu structure in a well lit or dark environment. Direct controls such as lamp mode, aspect ratio, volume and input selection eliminates multiple button pushes.



Digital Inputs

Among the PA Series' wide selection of inputs are dual HDMI w/HDCP and DisplayPort w/HDCP for connecting to high-definition sources such as Blu-ray players, cable boxes, satellite receivers and personal computers.



Cable Cover

This included accessory creates a clean look for your installation, while hiding signal cables and the power cord.



ADVANCED SOFTWARE FEATURES

Cornerstone

Enhanced keystone correction allows for horizontal, vertical and diagonal image correction for aligned images even when the projector is set up at an angle to the screen.



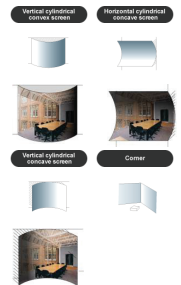
3D

When combined with active shutter glasses and 3D emitter, the PA Series Projectors create 3D images from a computer or Blu-ray player. The PA Series utilize the 3D sync line output from the projector to connect to the 3D emitter. Optional 3D glasses and emitters from XPAND are available from NEC.



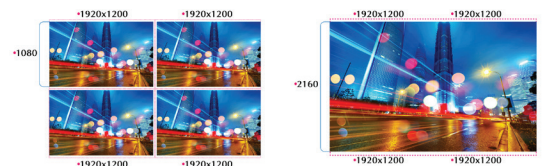
Geometric Correction

Projecting an image isn't confined to a standard flat screen or wall with the NEC PA Series. Geometric correction allows these models to project an image on spheres, cylinders, corner angles and many more non-standard surfaces.



Screen Splitter

NEC is committed to bringing the latest and greatest innovation to projectors. Multi-display capabilities and TileMatrix technologies are integrated into the new PA series projectors. This processing is all done internally and therefore eliminates the additional hardware typically required to produce a beautiful 4K resolution image.



Screen Splitter (Multi Display) by Daisy Chain

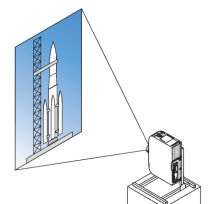
Tilt-free

The projector can be rotated freely (360°) to orient the image depending on the installation requirements



Portrait mode

Allows the projector to be rotated (and screen if necessary) to a vertical alignment so that portrait content can be viewed without black bars on the side when landscape mode is used.



UNIQUE FEATURES

Variable audio-out enables the remote control to be used to adjust volume of self-powered external speakers that are connected to the projector. In stand-by mode, the audio-out stays active, allowing the last input used to pass to the self-powered external speakers.

Advanced AccuBlend™ ensures detailed images when non-native resolution sources are connected to the projector

64-step image magnification with location control

Built-in HTTP page for control and monitoring over a LAN network. Email notification of error messages or lamp end-of-life can be sent to remote locations.

WARRANTY

Registered owners receive a five (5) years or 20,000 hours (whichever comes first) parts and labor warranty including InstaCare next business day exchange.

IN THE BOX

Remote control, batteries, power cord, cable cover, user's manual on CD-ROM, quick start guide, product registration card.

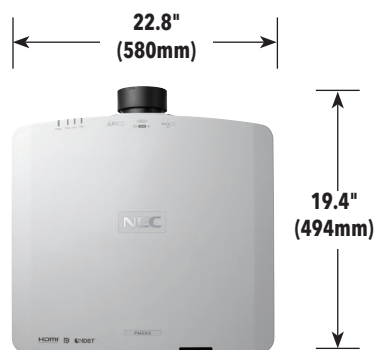
ACCESSORIES

RMT-PJ37	Replacement Remote Control
Optional Lenses	NP40ZL, NP41ZL, NP43ZL
DS1-MP10RX1	MultiPresenter Stick
XPAND X105-RF-1	3D Glasses
XPAND AD025-RF-X1	RF Emitter
PA600CM	Ceiling mount
AEC006009	Adjustable Extension Column, 6" - 9"
AEC012018	Adjustable Extension Column, 12" - 18"
AEC0203	Adjustable Extension Column, 2' - 3'
AEC0305	Adjustable Extension Column, 3' - 5'
NP01PW1	Power Cord
RGBCBL-PJPX	RGB Signal Cable
NECEW2-1	Extends term of parts and labor warranty to 4 years
ADVEXON1-1	Extends term of InstaCare service program to 2 years
ADVEXON2-1	Extends term of InstaCare service program to 3 years

ORDERING MODEL NUMBERS

NP-PA653UL

NP-PA803UL



	PA653UL	PA803UL	
Display Technology	0.76" LCD w MLA		
Light Output (lumens)	6500 normal	8000 normal	
Resolution	Native	WUXGA 1920 x 1200	
	Maximum	4K 4096 x 2160	
Contrast Ratio (up to)	2,500,000:1 with auto iris		
Laser Life (up to)	20,000 hours		
Screen Size (diagonal)	50 to 500 in. / 1.27 to 12.7m, NP40ZL, NP41ZL, NP43ZL		
Throw Ratio	NP40ZL	0.79 - 1.11	
	NP41ZL	1.30 - 3.02	
	NP43ZL	2.88 - 5.93	
Projection Distance	2.5 to 68.5 ft. / 0.74 to 20.9m		
Projection Angle	10.3 to 10.8° tele / 13.7 to 14.5° wide		
Lens	Zoom	Powered	
	Zoom Ratio	NP40ZL	1.4:1
		NP41ZL	2.3:1
		NP43ZL	2.0:1
	Focus	Powered	
	NP40ZL	Power zoom / Power focus, F=2.0 to 2.5, f= 13.3 to 18.6mm, 3.6lbs. / 1.63 kg	
	NP41ZL	Power zoom / Power focus, F=1.7 to 2.0, f= 21.8 to 49.8mm, 3.9 lbs. / 1.75 kg	
NP43ZL	Power zoom / Power focus, F=2.2 to 2.6, f= 49.7 to 99.8mm, 3.9 lbs. / 1.77 kg		
Shift	Powered +0.5/-0.1 vertical, +/-30 horizontal		
Shutter	Laser Shutter		
Keystone Correction	+/- 40° horizontal, +/- 40° vertical		
Synchronization Range	Horizontal	Analog: 15-100kHz, Digital: 15-153kHz	
	Vertical	Analog: 48-120Hz, Digital: 24-120Hz	
Supported Video Standards	NTSC, NTSC4.43, PAL, PAL-60, PAL-M, PAL-N, SECAM		
SD/HD Video Signal Compatibility	4K, 1080p, 1080i, 720p, 576p, 576i, 480p, 480i		
PC Signal Compatibility	VGA, SVGA, XGA, SXGA, SXGA+, UXGA, WUXGA		
Macintosh Compatibility	Yes		
Input Terminals	RGB1 (analog)	VGA 15 pin D-sub, Component video using ADP-CV1E adapter	
	RGB2 (digital)	HDMI (V2.0) w/HDCP (V1.4/2.2)	
	RGB3 (digital)	HDMI (V2.0) w/HDCP (V1.4/2.2)	
	RGB4 (digital)	DisplayPort w/HDCP (V1.4)	
	RGB5 (digital)	HDBaseT w/HDCP (V1.4/2.2)	
	Audio1	Stereo Mini Jack	
Output Terminals	Monitor Out	HDBaseT w/HDCP (V1.4/2.2)	
	Audio Out	Stereo Mini Jack	
	3D Sync Line	3Pin D	
External Control	RS-232, IR, HDBaseT, DDC/CI, RJ-45, USB (USB 2.0)		
Sync Compatibility	Separate Sync / Composite Sync / Sync on G		
Power Requirements	100 - 240V AC, 50/60Hz		
Input Current	10.2A - 4.5A	11.8A - 5.2A	
Power Consumption			
(ECO off/ECO Mode/Standby/Standby-Power Saving)	672W / 437W / 0.64W / 0.11	798W / 470W / 0.64W / 0.11	
Installation Orientation	Floor/Front, Floor/Rear, Ceiling/Front, Ceiling/Rear		
Dimensions (WxDxH)	22.8 x 19.4 x 8.2 in. / 580 x 494 x 208mm		
Net Weight	40.1lbs. / 18.2 kg		
Fan Noise	39 dB normal / 33 dB eco		
Regulations			
U.S.	FCC Part15 Subpart B(ANSI C63.4:2014), UL62368-1:2nd Edition		
Canada	CSA C22.2 No.60950-1-07,2nd Edition,2014, NOM		
Operating Temperature	41° - 104°F / 5° - 40°C		
Humidity	20-80% non-condensing		
Storage	14° - 122°F / -10° - 50°C		
Fan Noise	39 dB normal / 33 dB eco		
Regulations	USA: UL 1950 FCC Class B, Canada: CSA950 (C-UL), NOM		
Operating Temperature	41° - 104°F / 5° - 40°C		
Humidity	20-80% non-condensing		
Storage	-14° - 122°F / -10° - 50°C		

* Lens does not ship with the projector.
Additional accessories are available, including screens, carts, mount accessories and replacement cables. Visit www.necdisplay.com for details.



3D Reform, Advanced AccuBlend, AutoSense and ECO Mode are trademarks of NEC Display Solutions. HDMI, the HDMI Logo and High-Definition Multimedia Interface are trademarks or registered trademarks of HDMI Licensing LLC. HDBaseT™ and the HDBaseT Alliance logo are trademarks of the HDBaseT Alliance. All other brand or product names are trademarks or registered trademarks of their respective holders. Product specifications subject to change.

©2017 NEC Display Solutions of America, Inc. All rights reserved.

Cat.No. 25.NEC.80.GLUN.295 | rev 9.20.17

www.necdisplay.com