

Digital Optical Audio Switcher

Operation Manual



DT-21

TABLE OF CONTENTS

1. Introduction.....	1
2. Main Features.....	1
3. Operation Controls and Functions.....	2
3.1 Front Panel.....	2
3.2 Rear Panel.....	2
3.3 Side Panel.....	2
4. Connection and Installation.....	3
5. Specifications.....	3

1. Introduction

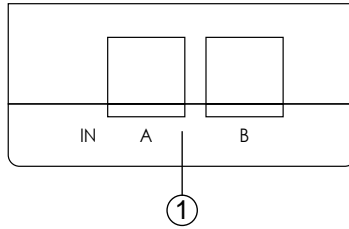
Digital Optical Audio Switcher is designed for the audio signal selection from two digital optical inputs to one output, using TosLink (Optical Fiber) cables. The Optical Fiber cables connected to both ends of the unit can run up to 5 meters while still provide reliable and lossless audio signal transmission. The product is compact and easy to install, and that makes it a very handy gadget recommended for either home or professional audio switching.

2. Main Features

- Supports S/PDIF standard of digital audio transmission.
- Supports uncompressed 2-channel LPCM (Linear Pulse Code Modulation) audio signal.
- Supports compressed 2-channel and multi-channel Dolby and DTS audio signal.
- Provides electromagnetic-noise-free transmission.
- Easy to install and simple to operate.

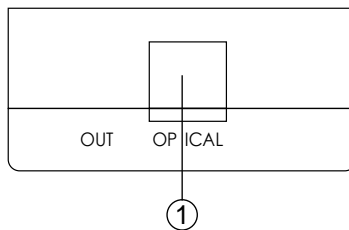
3. Operation Controls and Functions

3.1 Front Panel



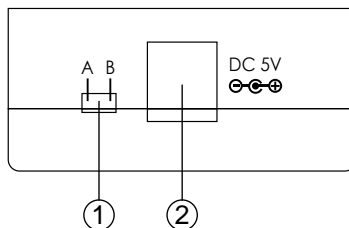
- ① TOSLink (Optical Fiber) Input Ports A and B: Connect the TOSLink input ports to the TOSLink output port of audio equipments such as audio amplifier, AV receiver or DVD player.

3.2 Rear Panel



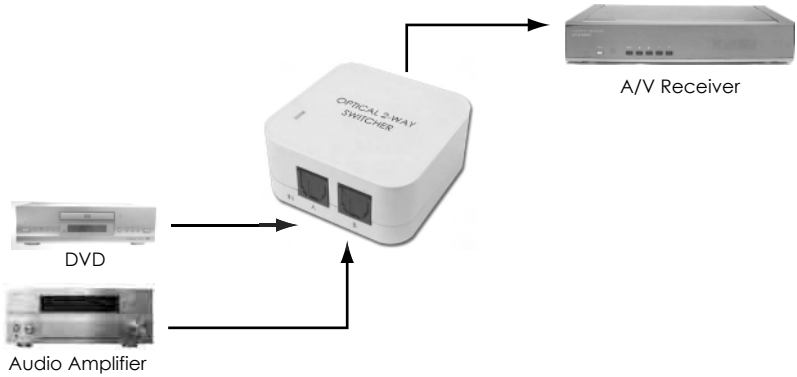
- ① TOSLink (Optical Fiber) Output Port: Connect the TOSLink output port to the TOSLink input port of audio equipment such as audio amplifier and AV receiver.

3.3 Side Panel



- ① Input Selection: Use this mini switcher to select from 2 input ports A and B.
② Power: Plug 5V DC power supply into the unit and connect the adaptor to AC wall outlet.

4. Connection and Installation



5. Specifications

Input ports	2 x TOSLink (Optical Fiber)
Output port	1 x TOSLink (Optical Fiber)
Power Supply	5V/0.36~0.5A DC (US/EU standards, CE/FCC/UL certified)
Dimensions (mm)	46(W) x 45.5(D) x 23.5(H)
Weight(g)	22
Chassis Material	Plastic
Silk Skin Color	White
Operating Temperature	Operating from 0°C ~ 40°C



CYPRESS TECHNOLOGY CO., LTD.
Home page: <http://www.cypress.com.tw>