



CPLUS-V11PI

4K UHD+ Audio Embedder



4kx2k+
HDCP 2.2

Operation Manual

DISCLAIMERS

The information in this manual has been carefully checked and is believed to be accurate. Cypress Technology assumes no responsibility for any infringements of patents or other rights of third parties which may result from its use.

Cypress Technology assumes no responsibility for any inaccuracies that may be contained in this document. Cypress also makes no commitment to update or to keep current the information contained in this document.

Cypress Technology reserves the right to make improvements to this document and/or product at any time and without notice.

COPYRIGHT NOTICE

No part of this document may be reproduced, transmitted, transcribed, stored in a retrieval system, or any of its part translated into any language or computer file, in any form or by any means—electronic, mechanical, magnetic, optical, chemical, manual, or otherwise—without express written permission and consent from Cypress Technology.

© Copyright 2015 by Cypress Technology.

All Rights Reserved.

TRADEMARK ACKNOWLEDGMENTS

All products or service names mentioned in this document may be trademarks of the companies with which they are associated.





SAFETY PRECAUTIONS

Please read all instructions before attempting to unpack, install or operate this equipment and before connecting the power supply.

Please keep the following in mind as you unpack and install this equipment:

- Always follow basic safety precautions to reduce the risk of fire, electrical shock and injury to persons.
- To prevent fire or shock hazard, do not expose the unit to rain, moisture or install this product near water.
- Never spill liquid of any kind on or into this product.
- Never push an object of any kind into this product through any openings or empty slots in the unit, as you may damage parts inside the unit.
- Do not attach the power supply cabling to building surfaces.
- Use only the supplied power supply unit (PSU). Do not use the PSU if it is damaged.
- Do not allow anything to rest on the power cabling or allow any weight to be placed upon it or any person walk on it.
- To protect the unit from overheating, do not block any vents or openings in the unit housing that provide ventilation and allow for sufficient space for air to circulate around the unit.

REVISION HISTORY

VERSION NO.	DATE (DD/MM/YY)	SUMMARY OF CHANGE
RDV1	24/11/16	Preliminary release



CONTENTS

- 1. Introduction..... 1**
- 2. Applications..... 1**
- 3. Package Contents 1**
- 4. System Requirements..... 1**
- 5. Features 2**
- 6. Operation Controls and Functions..... 3**
 - 6.1 Front Panel..... 3
 - 6.2 Rear Panel..... 4
 - 6.3 Virtual COM Port Settings & Commands..... 4
 - 6.4 EDID Manager 6
- 7. Connection Diagram 10**
- 8. Specifications 11**
- 9. Acronyms 12**





1. INTRODUCTION

This 4K UHD+ Audio Embedder is designed to insert an external audio signal (analog or digital) into any HDMI or DVI (with HDMI to DVI adaptor) source signal to generate an HDMI compliant output with new audio. Both stereo LPCM 2.0 and multi-channel bitstream audio is supported for insertion and the preferred source can be selected with a simple switch. Both the input and output HDMI ports support 4K UHD+ resolutions up to 4K@60Hz (YUV 4:4:4, 8-bit) and are capable of providing high quality audio and video performance. This unit supports pass-through of HD and standard bitstream formats as well as LPCM 7.1 with audio sampling rates up to 192 kHz. Built in EDID management support allows the user select from multiple EDIDs and, with the use of optional PC software, to edit, upload and download EDID files.

2. APPLICATIONS

- Combines external audio and DVI video (via DVI to HDMI adaptor) to be output as an HDMI signal
- Replaces audio in the original HDMI signal with an external audio source
- AV system integration and home theater installation
- HDMI/DVI EDID management

3. PACKAGE CONTENTS

- 1 x UHD 4K 6G with HDCP2.2 Audio Inserter
- 1 x 5V Power Adaptor
- Operation Manual

4. SYSTEM REQUIREMENTS

- HDMI source equipment such as media players, video game consoles or set-top boxes.
- HDMI receiving equipment such as HDTVs, monitors or audio amplifiers.
- Analog audio receiving equipment such as audio amplifiers or powered speakers.
- The use of "Premium High Speed HDMI" cables is highly recommended.

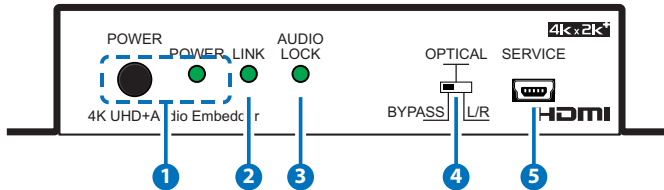
5. FEATURES

- HDMI input and output with 18Gbps (600MHz) 4K UHD+ support
- DVI 1.0 compliant with the use of an HDMI-DVI adaptor
- HDCP 1.4 and 2.2 compliant
- Supports HD resolutions up to 3840x2160@60 Hz (YUV 4:4:4, 8-bit) & 4096x2160@60 Hz (YUV 4:4:4, 8-bit)
- Supports 48-bit Deep Color up to 1080p60
- Supports pass-through of LPCM 7.1, bitstream and HD bitstream audio formats over HDMI
- Supports embedding external audio sources (analog stereo or digital S/PDIF) into an existing HDMI source, or adding audio to a DVI source (output as HDMI)
- Supports HDMI audio sampling rates up to 192 kHz
- Supports the following S/PDIF audio sampling rates: 32kHz, 44.1 kHz, 48 kHz, 88.2 kHz, 96 kHz, 192 kHz
- Provides EDID management with EDID bypass and 2 user modifiable EDIDs
- PC based EDID management tool support
- Outputs a 720p60 color bar pattern when no input is connected
- Supports RS-232 style control via a Virtual COM port over USB

Note: 4K UHD+ sources or equivalently high-bandwidth signals require an appropriate compatible display and HDMI cables in order to achieve the best image quality. The use of "Premium High Speed HDMI" cables is highly recommended.

6. OPERATION CONTROLS AND FUNCTIONS

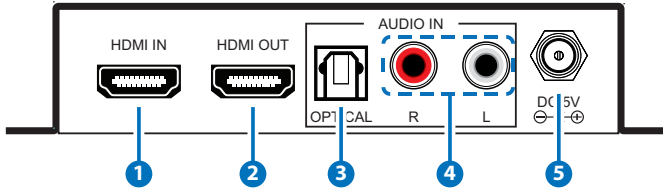
6.1 Front Panel



- 1 POWER & POWER LED:** Press this button to power the unit on or off. The LED will be lit when the unit is receiving power.

Note: Press and hold the Power button for 3 seconds to perform a factory reset. Release the button once the LEDs begin flashing.
- 2 LINK:** This LED will illuminate to indicate that a live source has been detected on the input port. When no source is detected the LED will remain off.
- 3 AUDIO LOCK:** The LED will illuminate when Audio has been detected
- 4 BYPASS/OPTICAL & L/R:** This switch selects the source of the audio to be embedded in the HDMI output. "BYPASS" passes the audio directly from the HDMI input to the HDMI output without modification. "OPTICAL" embeds the audio from the optical S/PDIF audio input (LPCM 2.0 or bitstream). "L/R" embeds the audio from the analog stereo inputs (LPCM 2.0 only).
- 5 SERVICE:** This slot is for EDID management, control and firmware update use. Connect directly to your PC/laptop using a standard Mini-USB cable to connect using the PC software or to send commands (via virtual COM port).

6.2 Rear Panel



- 1 **HDMI IN:** Connect to HDMI source equipment such as a media player, game console or set-top box.
- 2 **HDMI OUT:** Connect to HDMI TVs, monitors or amplifiers for digital video and audio output. (LPCM up to 7.1, bitstream, HD bitstream)
- 3 **OPTICAL IN:** Connect from audio source equipment such as AV receiver or DVD player with optical signal output.
- 4 **L/R IN:** Connect to the stereo analog output of a device such as a CD player, PC or DVD player.
- 5 **DC 5V:** Plug the 5V DC power adapter into the unit and connect it to an AC wall outlet for power.

6.3 Virtual COM Port Settings & Commands

Settings:

Baud Rate: 115200bps

Data bits: 8

Parity: None

Flow Control: None

Stop Bits: 1



Commands:

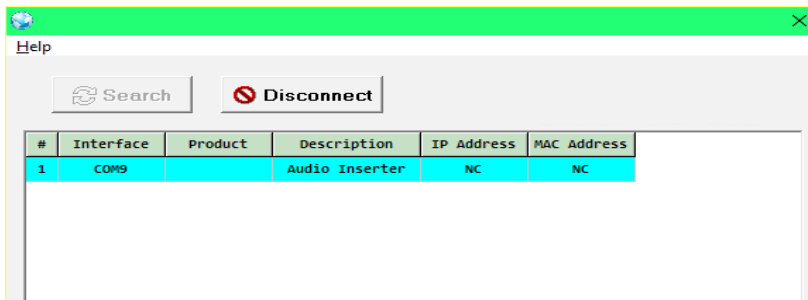
Command Name	Description	Parameters
P0	SET UNIT POWER OFF	NONE
P1	SET UNIT POWER ON	NONE
P?	GET POWER STATUS	NONE
SOURCEDET	SHOW INPUT INFORMATION	NONE
SINKINFO	SHOW SINK INFORMATION	NONE
HDCPIN	SET/SHOW INPUT HDCP STATUS	HDCPIN N, N=1~3, N=? (STATUS)
1:FOLLOW IN		
2:FOLLOW OUT		
3:APPLE MODE		
ECHO	SET/SHOW CONSOLE AUTO ECHO MODE	ECHO N, N=0~1,0:OFF,1:ON, N=? (STATUS)
FADEFAULT	SET UNIT TO FACTORY DEFAULT	NONE
VER	SHOW UNIT FIRMWARE VERSION	NONE
REBOOT	SYSTEM REBOOT	NONE
?	SHOW DESCRIPTION OF COMMAND	NONE
HELP	SHOW DESCRIPTION OF COMMAND	NONE

Note: Commands will not be executed unless followed by a carriage return. Commands are not case-sensitive

6.4 EDID Manager

This unit uses an EDID Management application which allows the user to copy the EDID from an attached display, edit an existing EDID file stored on the PC or create a basic EDID from scratch. The EDID can then be uploaded to the unit for use. Please obtain the EDID Management software from your authorized dealer and save it in a directory where you can easily find it.

Before connecting the unit to your PC, please install the appropriate Virtual COM Port Driver depending on your Windows version. Next, install the EDID Management software. After the installation has successfully completed, an icon for it will appear on the windows desktop. Launch the software by double-clicking on the icon and the EDID Management device detection window will open up on your screen.



After launching the software, power the unit on and then connect it to the PC/laptop using a USB cable. Click on the "Search" button and any detected units will be displayed in the list. Clicking on a detected unit will open the EDID Commander window.

EDID Controller Tab

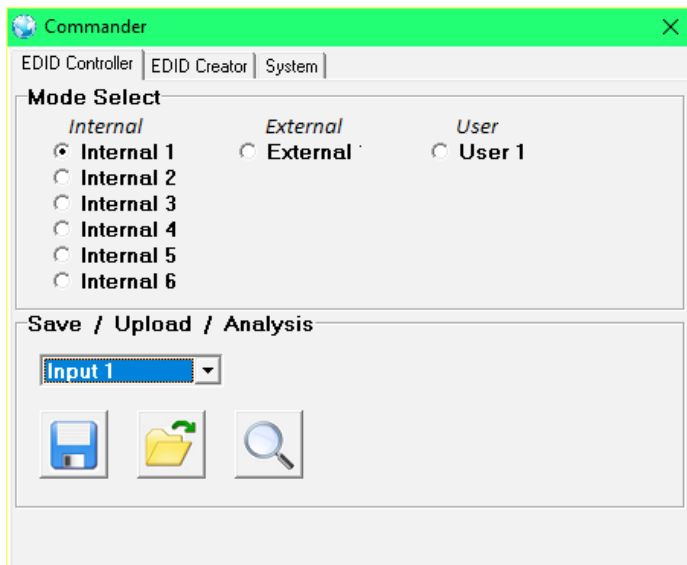
Mode Select: The currently selected EDID is displayed here and can be changed by selecting from any of the available EDID options. There are 6 pre-defined "Internal" EDIDs, an "External" EDID which passes the EDID from the connected display, and a "User" EDID which is user-replaceable. To return the User EDID to its original value, please perform a factory reset on the unit.

The 6 Internal EDIDs are:

1. FHD (1080p60Hz) with LPCM 2.0
2. FHD (1080p60Hz) with LPCM 7.1 & Bitstream
3. 4K UHD+ (4K@30Hz) with LPCM 2.0
4. 4K UHD+ (4K@30Hz) with LPCM 7.1 & Bitstream
5. 4K+ UHD (4K@60Hz, 4:4:4, 8-bit) with LPCM 2.0
6. 4K+ UHD (4K@60Hz, 4:4:4, 8-bit) with LPCM 7.1 & Bitstream

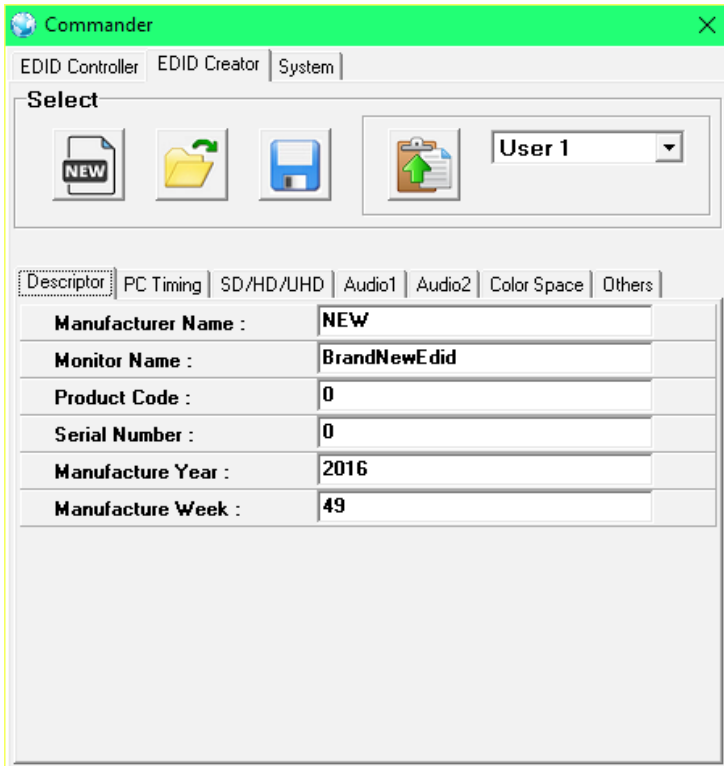
Save/Upload/Analysis: EDIDs may be saved to a PC, uploaded from a PC or analyzed.

- Any EDID from the unit or the connected HDMI display can be saved to your PC as a *.bin file by selecting the EDID source from the drop down menu and then clicking the “Save” icon.
- Previously saved EDID files (*.bin format) can be re-uploaded into the unit by selecting the User EDID to replace from the dropdown and then clicking the “Upload” icon. Before accepting the upload, the software will check and verify that the EDID’s header and checksum values are acceptable.
- To analyze any EDID stored within the unit, select the EDID to view from the dropdown and click on the “Analysis” icon.



EDID Creator Tab

Click on the EDID Creator tab to begin designing a new EDID from scratch (select the “New” icon), to modify an existing EDID stored on the PC as a .bin file (select the “Load” icon) or to edit an EDID copied from the unit via the EDID Analyzer’s edit option. Selecting “New” will automatically populate the various EDID fields with basic information that can be easily edited to match the user’s preferences. Clicking on the “Load” icon will open a file load window and after the *.bin file has been selected and loaded the EDID fields will be populated with the information from that file. The same will happen when the EDID is copied from the EDID Analyzer window.





The following tabs provide access to a wide range of EDID information which can be edited:

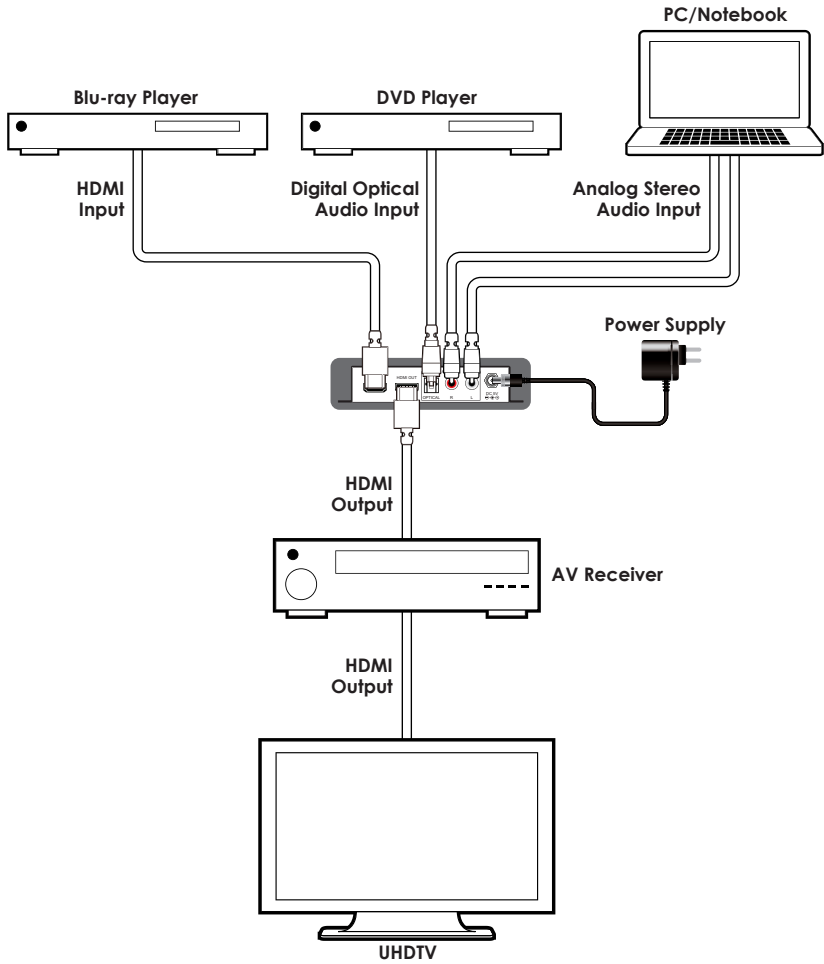
- **Descriptor:** This tab allows for the editing of various description and information fields within the EDID file such as Manufacturer Name, Monitor Name, etc.
- **PC Timing and SD/HD/UHD:** These tabs allow for the selection of the resolutions and refresh rates that the EDID will report as supported.
- **Audio1 and Audio2:** These tabs allow for the selection of which audio formats, audio frequencies, channels and speaker locations are supported.
- **Color Space:** This tab allows for the selection of which color formats and bit depths are supported, including BT.2020 and HDR support options.
- **Others:** This tab contains options for supporting 3D and defining the CEC Address.

Once the user is finished editing or creating an EDID it can be saved to a *.bin file locally or uploaded directly to the unit using the "Save" and "Upload" icons respectively.

System Tab

Select the System tab to edit the unit's description, to reset the unit to factory defaults and to view the unit's current hardware and firmware version information.

7. CONNECTION DIAGRAM





8. SPECIFICATIONS

Video Bandwidth	18Gbps (600Mhz)
Input Ports	1 x HDMI, 1 x Optical S/PDIF (Digital Audio), 2 x RCA (Analog Audio), 1 x Mini-USB (service & control only)
Output Port	1xHDMI
HDMI Audio Sampling Rate	Up to 192 kHz
Optical S/PDIF Audio Sampling Rate	32KHz, 44.1Khz, 48Khz, 88.2Khz, 96Khz, 192Khz
HDMI Cable I/O Distance*	10 meters, 1080p@12-bit 15 meters, 1080p@8-bit
HDMI Audio Format(Bypass)	LPCM 2.0/5.1/7.1, Bitstream, HD Bitstream
Optical Audio Format	LPCM 2.0, Bitstream
Analog Audio Format	2 Channel (Stereo)
Power Supply	5V / 2.6A DC (US/EU standards, CE/FCC/ UL certified)
ESD Protection	Human body model: ±8kV (air-gap discharge) ±4kV (contact discharge)
Chassis Material	Metal
Silkscreen color	Black
Dimensions	128mm x 25mm x 108mm (W×H×D) [Case Only] 128mm x 30mm x 116.8mm (W×H×D) [All Inclusive]
Weight	358g
Operating Temperature	0°C~40°C/32°F~104°F
Storage Temperature	-20°C~60°C/-4°F~140°F

Relative Humidity	20~90% RH (non-condensing)
Power Consumption	3.78w

***Note:** HDMI cable distance can be impacted by the materials and design of the cable used. The use of "Premium High Speed HDMI" cables is highly recommended.

9. ACRONYMS

ACRONYM	COMPLETE TERM
CEC	Consumer Electronics Control
COAX	Coaxial
DTS	Digital Theater System
DVI	Digital Visual Interface
HDCP	High-bandwidth Digital Content Protection
HDMI	High-Definition Multimedia Interface
HDTV	High-Definition Television
OPT	Optical
USB	Universal Serial Bus
VGA	Video Graphics Array
WUXGA (RB)	Widescreen Ultra Extended Graphics Array (Reduce Blanking)



CYPRESS TECHNOLOGY CO., LTD
Home page: <http://www.cypress.com.tw>

MPM-CPLUSV11PI