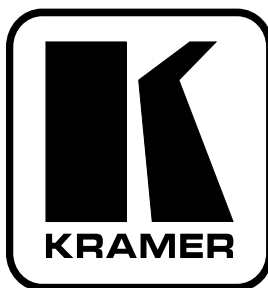


**Kramer Electronics, Ltd.**



# **USER MANUAL**

**Model:**

**900N**

*Power Amplifier*

## Contents

<b>1</b>	<b>Introduction</b>	<b>1</b>
<b>2</b>	<b>Getting Started</b>	<b>1</b>
2.1	Quick Start	2
<b>3</b>	<b>Overview</b>	<b>3</b>
<b>4</b>	<b>Your 900N Power Amplifier</b>	<b>4</b>
<b>5</b>	<b>Connecting your 900N Power Amplifier</b>	<b>5</b>
<b>6</b>	<b>Technical Specifications</b>	<b>6</b>

## Figures

Figure 1: 900N Power Amplifier	4
Figure 2: Connecting the 900N Power Amplifier	5

## Tables

Table 1: Features and Functions of the 900N Power Amplifier	4
Table 2: Technical Specifications of the 900N Power Amplifier	6

## 1 Introduction

Welcome to Kramer Electronics! Since 1981, Kramer Electronics has been providing a world of unique, creative, and affordable solutions to the vast range of problems that confront the video, audio, presentation, and broadcasting professional on a daily basis. In recent years, we have redesigned and upgraded most of our line, making the best even better! Our 1,000-plus different models now appear in 11 groups<sup>1</sup> that are clearly defined by function.

Thank you for purchasing the Kramer **900N Power Amplifier**. This product is ideal for:

- Presentation rooms and multimedia applications for quick, local audio amplification
- Personal audio listening (for example, a PC and portable CD player)

The package includes the following items:

- **900N Power Amplifier**
- Power adapter (12V DC Input)
- This user manual<sup>2</sup>

## 2 Getting Started

We recommend that you:

- Unpack the equipment carefully and save the original box and packaging materials for possible future shipment
- Review the contents of this user manual
- Use Kramer high-performance high-resolution cables<sup>3</sup>

---

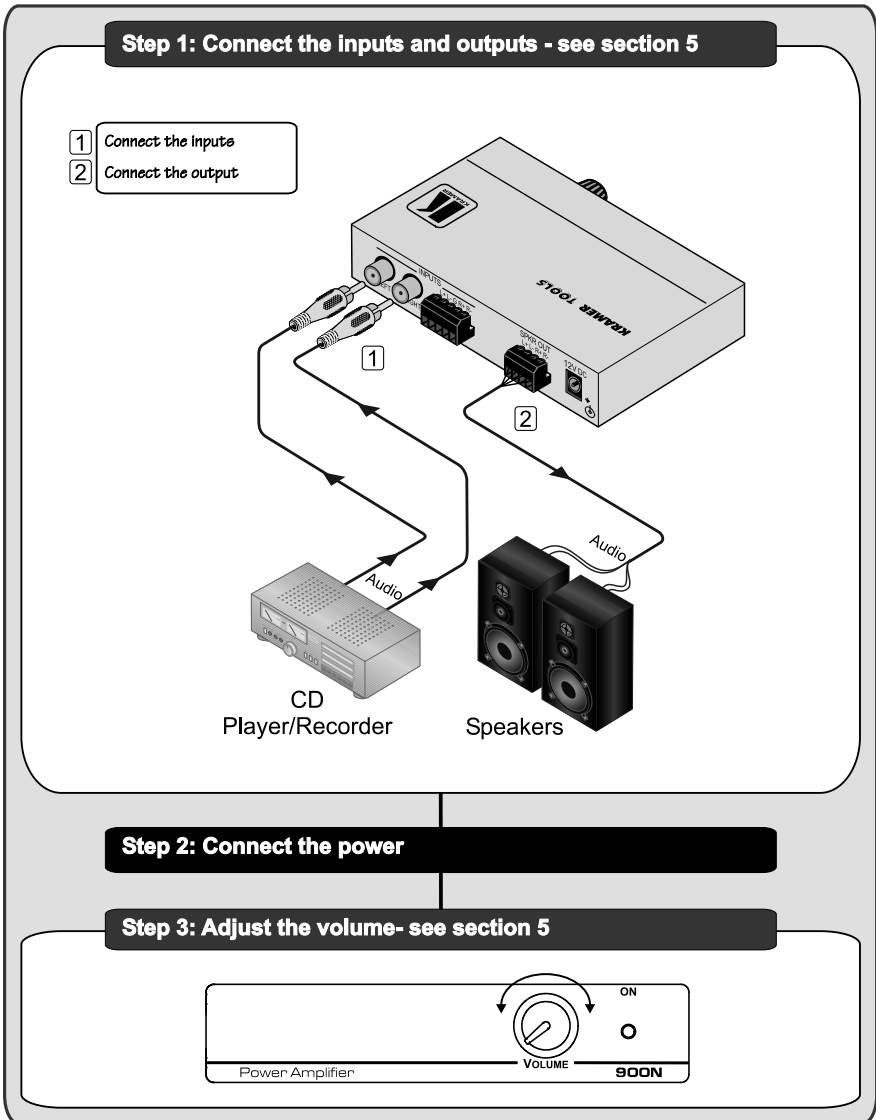
1 GROUP 1: Distribution Amplifiers; GROUP 2: Switchers and Matrix Switchers; GROUP 3: Control Systems; GROUP 4: Format/Standards Converters; GROUP 5: Range Extenders and Repeaters; GROUP 6: Specialty AV Products; GROUP 7: Scan Converters and Scalers; GROUP 8: Cables and Connectors; GROUP 9: Room Connectivity; GROUP 10: Accessories and Rack Adapters; GROUP 11: Sierra Products

2 Download up-to-date Kramer user manuals from the Internet at this URL: <http://www.kramerelectronics.com>

3 The complete list of Kramer cables is on our Web site at <http://www.kramerelectronics.com>

## 2.1 Quick Start

This quick start chart summarizes the basic setup and operation steps.



### 3 Overview

The Kramer **900N** is a high performance power amplifier that can accept a balanced stereo audio input on a 5-pin terminal block connector, or<sup>1</sup> an unbalanced stereo audio input on two RCA connectors.

The balanced and unbalanced stereo audio inputs are converted to a differential stereo audio output for speakers on a 4-pin terminal block connector.

The **900N Power Amplifier** includes:

- An audio level knob to adjust the audio level output
- An ON LED indicating the unit is powered up
- A 12V power source making it ideal even for field operation
- An easy-to-connect detachable terminal block connector

The **900N Power Amplifier** is housed in a Kramer TOOLS enclosure.

To achieve the best performance:

- Use only good quality connection cables<sup>2</sup> to avoid interference, deterioration in signal quality due to poor matching, and elevated noise levels (often associated with low quality cables).
- Avoid interference from neighboring electrical appliances that may adversely influence signal quality and position your Kramer **900N** away from moisture, excessive sunlight and dust



**Caution** – No operator-serviceable parts inside unit.

**Warning** – Use only the Kramer Electronics input power wall adapter that is provided with this unit<sup>3</sup>.

**Warning** – Disconnect power and unplug unit from wall before installing or removing device or servicing unit.

<sup>1</sup> Both inputs cannot be connected simultaneously

<sup>2</sup> Available from Kramer Electronics on our Web site at <http://www.kramerelectronics.com>

<sup>3</sup> For example, part number 22535-000251

4 Your 900N Power Amplifier

Figure 1 and Table 1 define the **900N** Power Amplifier.

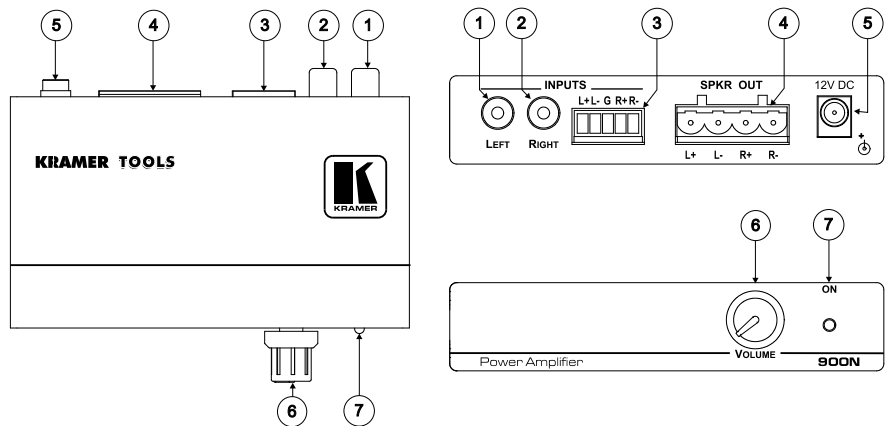


Figure 1: 900N Power Amplifier

Table 1: Features and Functions of the 900N Power Amplifier

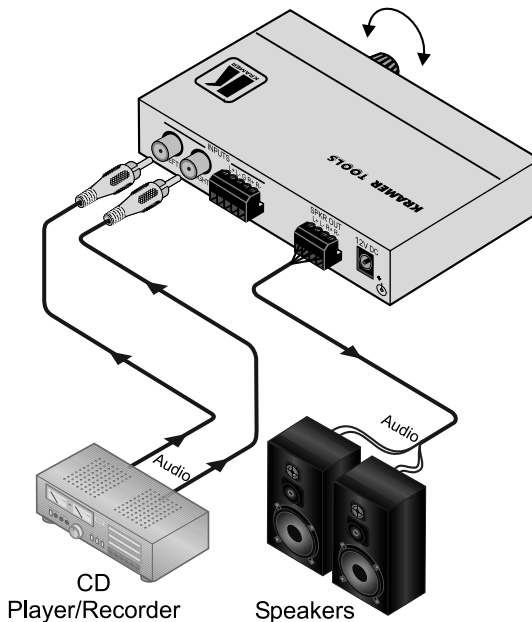
#	Feature	Function
1	INPUTS	LEFT RCA Connector
2		RIGHT RCA Connector
3		(L+L- G R+R-) Terminal Block Connector
4	SPKR OUT (L+L-R+R-) Terminal Block Connector	Connects to a pair of loudspeakers
5	12V DC	+12V DC connector for powering the unit
6	VOLUME Control Knob	Adjusts the output signal level
7	ON LED	Illuminates when receiving power

1 Either the RCA (unbalanced) input or the terminal block (balanced) input may be connected. You cannot connect both simultaneously

## 5 Connecting your 900N Power Amplifier

Connect your **900N**, as the example in *Figure 2* illustrates:

1. Connect an unbalanced stereo audio source (for example, an unbalanced stereo audio player) to the LEFT and RIGHT INPUT RCA connectors<sup>1</sup>.
2. Connect the SPKR OUT terminal block connector to a pair of loudspeakers, by connecting the left loudspeaker to the “L+” and the “L-” terminal block connectors, and the right loudspeaker to the “R+” and the “R-” terminal block connectors. **Do not ground the loudspeakers.**
3. Connect the 12V DC power adapter to the power socket and connect the adapter to the mains electricity (not shown in this illustration).
4. Adjust the volume by turning the volume control knob.



*Figure 2: Connecting the 900N Power Amplifier*

<sup>1</sup> Or alternatively, connect the balanced stereo audio source to the left (L+ L-) and right (R+ R-) INPUT terminal block connectors

## 6 Technical Specifications

*Table 2: Technical Specifications<sup>1</sup> of the 900N Power Amplifier*

INPUTS:	1 unbalanced stereo on RCA connectors 1 balanced stereo on a 5-pin terminal block connector
OUTPUT:	1 stereo speaker output on a 4-pin terminal block connector
OUTPUT POWER:	2x8.5W (4Ω)
OUTPUT MUSIC POWER:	2x35W (4Ω)
BANDWIDTH (-3dB):	24kHz
S/N RATIO:	55dB
CONTROLS:	<-40dB to +19dB until the compression threshold
COUPLING:	Input: AC; speakers out: DC
AUDIO THD + NOISE:	0.5% @ 1kHz
AUDIO 2nd HARMONIC:	0.04% @ 1kHz
POWER SOURCE:	12V DC, 2.1A
DIMENSIONS:	12 cm x 7.5 cm x 2.5 cm (4.7" x 2.95" x 0.98", W, D, H)
WEIGHT:	0.3kg (0.66lbs) approx.
ACCESSORIES:	Power supply, mounting bracket
OPTIONS:	RK-3T 19" rack adapter

<sup>1</sup> Specifications are subject to change without notice. Measurements are on the basis of 4Ω loads



---

## LIMITED WARRANTY

Kramer Electronics (hereafter *Kramer*) warrants this product free from defects in material and workmanship under the following terms.

### HOW LONG IS THE WARRANTY

Labor and parts are warranted for seven years from the date of the first customer purchase.

### WHO IS PROTECTED?

Only the first purchase customer may enforce this warranty.

### WHAT IS COVERED AND WHAT IS NOT COVERED

Except as below, this warranty covers all defects in material or workmanship in this product. The following are not covered by the warranty:

1. Any product which is not distributed by Kramer, or which is not purchased from an authorized Kramer dealer. If you are uncertain as to whether a dealer is authorized, please contact Kramer at one of the agents listed in the Web site [www.kramerelectronics.com](http://www.kramerelectronics.com).
2. Any product, on which the serial number has been defaced, modified or removed, or on which the WARRANTY VOID IF TAMPERED sticker has been torn, reattached, removed or otherwise interfered with.
3. Damage, deterioration or malfunction resulting from:
  - i) Accident, misuse, abuse, neglect, fire, water, lightning or other acts of nature
  - ii) Product modification, or failure to follow instructions supplied with the product
  - iii) Repair or attempted repair by anyone not authorized by Kramer
  - iv) Any shipment of the product (claims must be presented to the carrier)
  - v) Removal or installation of the product
  - vi) Any other cause, which does not relate to a product defect
  - vii) Cartons, equipment enclosures, cables or accessories used in conjunction with the product

### WHAT WE WILL PAY FOR AND WHAT WE WILL NOT PAY FOR

We will pay labor and material expenses for covered items. We will not pay for the following:

1. Removal or installations charges.
2. Costs of initial technical adjustments (set-up), including adjustment of user controls or programming. These costs are the responsibility of the Kramer dealer from whom the product was purchased.
3. Shipping charges.

### HOW YOU CAN GET WARRANTY SERVICE

1. To obtain service on your product, you must take or ship it prepaid to any authorized Kramer service center.
2. Whenever warranty service is required, the original dated invoice (or a copy) must be presented as proof of warranty coverage, and should be included in any shipment of the product. Please also include in any mailing a contact name, company, address, and a description of the problem(s).
3. For the name of the nearest Kramer authorized service center, consult your authorized dealer.

### LIMITATION OF IMPLIED WARRANTIES

All implied warranties, including warranties of merchantability and fitness for a particular purpose, are limited in duration to the length of this warranty.

### EXCLUSION OF DAMAGES

The liability of Kramer for any effective products is limited to the repair or replacement of the product at our option. Kramer shall not be liable for:

1. Damage to other property caused by defects in this product, damages based upon inconvenience, loss of use of the product, loss of time, commercial loss; or
2. Any other damages, whether incidental, consequential or otherwise. Some countries may not allow limitations on how long an implied warranty lasts and/or do not allow the exclusion or limitation of incidental or consequential damages, so the above limitations and exclusions may not apply to you.

This warranty gives you specific legal rights, and you may also have other rights, which vary from place to place.

**NOTE:** All products returned to Kramer for service must have prior approval. This may be obtained from your dealer.

This equipment has been tested to determine compliance with the requirements of:

- EN-50081: "Electromagnetic compatibility (EMC);  
generic emission standard.  
Part 1: Residential, commercial and light industry"
- EN-50082: "Electromagnetic compatibility (EMC) generic immunity standard.  
Part 1: Residential, commercial and light industry environment".
- CFR-47: FCC\* Rules and Regulations:  
Part 15: "Radio frequency devices  
Subpart B Unintentional radiators"

### CAUTION!

- ☒ Servicing the machines can only be done by an authorized Kramer technician. Any user who makes changes or modifications to the unit without the expressed approval of the manufacturer will void user authority to operate the equipment.
- ☒ Use the supplied DC power supply to feed power to the machine.
- ☒ Please use recommended interconnection cables to connect the machine to other components.  
\* FCC and CE approved using STP cable (for twisted pair products)



---

**For the latest information on our products and a list of Kramer distributors, visit our Web site: [www.kramerelectronics.com](http://www.kramerelectronics.com) where updates to this user manual may be found.**  
**We welcome your questions, comments and feedback.**



**Caution**

**Safety Warning:**

Disconnect the unit from the power supply before opening/servicing.



---

**Kramer Electronics, Ltd.**

Web site: [www.kramerelectronics.com](http://www.kramerelectronics.com)

E-mail: [info@kramerel.com](mailto:info@kramerel.com)

**P/N: 2900-000558 REV 1**